

Continuous Time Structural Equation Modelling With R Package `ctsem`

Charles C. Driver

Max Planck Institute for Human Development Radboud University Nijmegen

Johan H. L. Oud

Manuel C. Voelkle

Max Planck Institute for Human Development

Abstract

We introduce `ctsem` (Driver, Oud, and Voelkle 2015), an R package for continuous time structural equation modelling of panel ($N > 1$) and time series ($N = 1$) data, using either full information maximum likelihood or the Kalman filter. Most dynamic models for longitudinal data in the social and behavioural sciences are discrete time models. An assumption of discrete time models is that time intervals between measurements are equal, and that all subjects were assessed at the same intervals. Violations of this assumption are regularly ignored due to the difficulty of accounting for varying time intervals, therefore parameter estimates can be severely biased. By using stochastic differential equations and estimating an underlying continuous process, continuous time models allow for any pattern of measurement occasions. By interfacing to a general purpose SEM package (`OpenMx`), `ctsem` combines the flexible specification of structural equation models with the enhanced data gathering opportunities and improved estimation of continuous time models. `ctsem` can estimate relationships over time for multiple latent processes, measured by multiple noisy indicators with varying time intervals between observations. Within and between effects are estimated simultaneously by modelling both observed covariates and unobserved heterogeneity. Exogenous shocks with different shapes, group differences, higher order diffusion effects and oscillating processes can all be simply modelled. We first briefly introduce and define continuous time models, then show how to specify and estimate a range of continuous time models using `ctsem`.

Keywords: time series, longitudinal modelling, panel data, state space, structural equation modelling, continuous time, stochastic differential equation, dynamic models, Kalman filter, R.

1. Introduction

Dynamic models, such as the well known vector autoregressive model, are widely used in the social and behavioural sciences. They allow us to see how fluctuations in processes relate to later values of those processes, the effect of an input at a particular time, how the various factors relate to average levels of the processes, and many other possibilities. Some examples with panel data include the impact of European institutional changes on business cycles (Canova, Ciccarelli, and Ortega 2012), the coupling between sensory and intellectual

functioning (Ghisletta and Lindenberger 2005), or the analysis of bidirectional links between children’s delinquency and the quality of parent-child relationships (Keijsers, Loeber, Branje, and Meeus 2011). Examples of single subject approaches are studies on the decline in pneumonia rates in the USA after a vaccine introduction (Grijalva, Nuorti, Arbogast, Martin, Edwards, and Griffin 2007), or the lack of a relationship between antidepressant sales and public health in Iceland (Helgason, Tomasson, and Zoega 2004). At present, applications of dynamic models in the social and behavioural sciences are almost exclusively limited to *discrete time models*. In discrete time models it is assumed that time progresses in discrete steps, that time intervals between measurement occasions are equal, and that, in case of panel data, all subjects are assessed with the same time intervals. In many cases, these assumptions are not met, resulting in biased parameter estimates and a misunderstanding of the strength and time course of effects. This concept is illustrated in Figure 1 (with a comprehensive example in Appendix A). In the upper panel, Figure 1 shows a true autoregressive effect of .80 between observed variables (represented by squares), assuming equal intervals of length $\Delta t = 1$ (represented by equal distances between observed variables), while the lower panel shows a process with two intervals of $\Delta t = 1$ and one interval $\Delta t = 2$. In the top panel, the meaning of the estimate of .80 is clear – it refers to the autoregression estimate for 1 unit of time. In the lower case, however, the autoregression estimate of .73 is ambiguous – it is too low to characterise the relation between the first three occasions (correct value of .80 is in brackets) and too high between the last two occasions (correct value of .64).

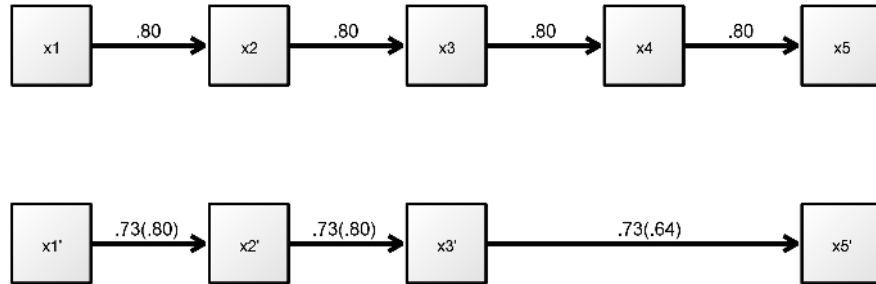


Figure 1: Two autoregressive processes, each exhibiting a true autoregressive effect of .80 for 1 unit of time. The top process is measured with equal time intervals (represented by the space between observations) of 1 unit, while the lower process has unequal intervals.

Obviously, parameter estimates and, thus, scientific conclusions, are biased when observation intervals vary and this is not adequately accounted for. In simple cases, such as the example in Figure 1, additional variables – so called phantom variables (Rindskopf 1984), with missing values for all individuals – could be added in order to artificially create equally spaced time intervals. For example, an additional variable could be specified at t4, resulting in equal time intervals and permitting the use of standard discrete time models. For complex patterns of individually varying time intervals, however, this approach quickly becomes untenable (Voelkle and Oud 2013). Furthermore, with discrete time models it is difficult to compare results obtained from different studies with unequal time intervals, which poses a limitation to the production of cumulative knowledge in science (Voelkle, Oud, Davidov, and Schmidt 2012).

Continuous time models overcome these problems, offering researchers the possibility to estimate parameters free from bias due to unequal intervals, easily compare between studies and datasets with different observation schedules, gather data with variable time intervals between observations, understand changes in observed effects over time, and parsimoniously specify complex dynamics. Although continuous time models have a long history (Coleman 1964; Hannan and Tuma 1979), their use in the social sciences is still uncommon. At least in part, this is due to a lack of suitable software to specify and estimate continuous time models. With the introduction of **ctsem** in this article, we want to overcome this limitation. Although we will define continuous time models in the next section and provide several examples in the sections thereafter, a comprehensive treatment of continuous time models is beyond the scope of this article. For a more general introduction to continuous time models by means of SEM, the reader is referred to Voelkle *et al.* (2012). For additional information on the technical details we refer the reader to Oud and Jansen (2000).

While there are already a range of packages that deal with continuous time (stochastic differential equation) models in R, most focus on single subject applications. These include **sde** (Iacus 2015), **yuima** (Brouste, Fukasawa, Hino, Iacus, Kamatani, Koike, Masuda, Nomura, Ogihara, Shimuzu, and others 2014), **SIM.DiffProc** (Boukhetala and Guidoum 2014), **cts** (Wang 2013), **POMP** (King *et al.* 2010). For multi-subject approaches, **OpenMx** (Neale *et al.* 2015) now includes the function `mxExpectationStateSpaceContinuousTime`, which can be combined with the function `mxFitFunctionMultigroup` for fixed effects based group analysis. **PSM** (Klim, Mortensen, Kristensen, Overgaard, and Madsen 2009) has implemented a broad range of mixed-effects models, but the specification and optimization of models is relatively demanding in terms of user skill and computational resources. **ctsem** is focused on providing an accessible workflow for full information maximum likelihood estimation of time series and panel data based continuous time multivariate autoregressive models with random intercepts. Using **ctsem**, one may specify: Cross lagged panel models; latent growth curve models; random intercepts at the latent or manifest level; damped oscillators; dynamic factor analysis models; constant or time dependent exogenous predictors; continuous time ARMAX models from the time series tradition; multiple groups or individuals with different parameters; or any combination of the preceding. First order models should be generally equivalent to discrete time first order models, if there is no variability in time intervals. For an example of this equivalence in regards to dual change score models see Voelkle and Oud (2015). For an R script and plot comparing estimates from **ctsem** and other packages (as well as the use of the `ctPSMfit` function, to fit some models specified using **ctsem** with **PSM**), see Appendix B.

The remainder of this article is organised as follows: in Section 2, we provide a formal definition of the continuous time models dealt with in this package. In Section 3 we will show how to install **ctsem** and give an overview of the package. In Section 4, we will review different data structures and discuss the role of time in continuous time models. In Section 5, we will show how to specify continuous time models in **ctsem**, followed by a discussion of model estimation and testing in Section 6. In Section 7 we will discuss various extensions of basic continuous time models, including unobserved heterogeneity, time dependent and time independent exogenous predictors, time series, multiple group models, additional models of the diffusion process, and the analysis of oscillations. We will end with some discussion of various specification options and tips for model fitting in Section 8, and point to current limitations and future research and development directions in Section 9.

2. Continuous time models: fundamentals

The class of continuous time models implemented in **ctsem** is represented by the multivariate stochastic differential equation:

$$d\boldsymbol{\eta}_i(t) = \left(\mathbf{A}\boldsymbol{\eta}_i(t) + \boldsymbol{\xi}_i + \mathbf{B}\mathbf{z}_i + \mathbf{M}\mathbf{x}_i(t) \sum_{u_i \in U_i} \boldsymbol{\delta}(t - u_i) \right) dt + \mathbf{G}d\mathbf{W}_i(t) \quad (1)$$

Vector $\boldsymbol{\eta}_i(t) \in \mathbb{R}^v$ is a v -variable vector of the processes of interest at time t , for subject i . The matrix $\mathbf{A} \in \mathbb{R}^{v \times v}$ represents the so-called drift matrix, with auto effects on the diagonal and cross effects on the off-diagonals characterising the temporal relationships of the processes.

The asymptotic level of processes $\boldsymbol{\eta}_i(t)$ is determined by the v -length vector of random variables $\boldsymbol{\xi}_i$, with $\boldsymbol{\xi}_i \sim N(\boldsymbol{\kappa}, \boldsymbol{\phi}_\xi)$ for every i , where vector $\boldsymbol{\kappa} \in \mathbb{R}^v$ denotes the continuous time intercepts, and matrix $\boldsymbol{\phi}_\xi \in \mathbb{R}^{v \times v}$ the covariance across subjects. $\boldsymbol{\xi}_i$ sets the long-term level of the processes – without it the processes of a stable model would always trend towards zero in the long-run.

The matrix $\mathbf{B} \in \mathbb{R}^{v \times p}$ represents the effect of the vector of time independent predictors $\mathbf{z} \in \mathbb{R}^{p \times 1}$ on processes $\boldsymbol{\eta}_i(t)$.

For time dependent (exogenous) predictors observed at times $u \in U_i \subset \mathbb{R}$, we use a Dirac delta function $\boldsymbol{\delta}(t - u_i)$. The Dirac delta is a generalised function that is ∞ at 0 and 0 elsewhere, yet has an integral of 1 (when 0 is in the range of integration). It is useful to model an impulse to a system, and here is scaled by the vector of time dependent predictors $\mathbf{x}_i(t)$. The effect of these impulses on processes $\boldsymbol{\eta}_i(t)$ is then $\mathbf{M} \in \mathbb{R}^{v \times l}$. Such an impulse form is used because the evolution of the time dependent inputs over time is not modelled, however this can be achieved by extending the state matrices, as demonstrated in Section 7.2.2.

$\mathbf{W}_i(t) \in \mathbb{R}^v$ represent independent Wiener processes, with a Wiener process being a random-walk in continuous time. $d\mathbf{W}_i(t)$ is meaningful in the context of stochastic differential equations, and represents the white noise, stochastic error term. Lower triangular matrix $\mathbf{G} \in \mathbb{R}^{v \times v}$ represents the effect of this white noise on $\boldsymbol{\eta}_i(t)$. \mathbf{Q} , where $\mathbf{Q} = \mathbf{G}\mathbf{G}^\top$, then represents the variance-covariance matrix of the diffusion process in continuous time.

The solution of the stochastic differential Equation 1 for any time interval $t - t_0$, with values at t_0 known, $t_0 > 0$, and $t > t_0$ is:

$$\begin{aligned} \boldsymbol{\eta}_i(t) = & e^{\mathbf{A}(t-t_0)}\boldsymbol{\eta}_i(t_0) + \\ & \mathbf{A}^{-1}[e^{\mathbf{A}(t-t_0)} - \mathbf{I}]\boldsymbol{\xi}_i + \\ & \mathbf{A}^{-1}[e^{\mathbf{A}(t-t_0)} - \mathbf{I}]\mathbf{B}\mathbf{z}_i + \\ & \sum_{u_i \in U_i \cap [t_0, t]} e^{\mathbf{A}(t-u)}\mathbf{M}\mathbf{x}_i(u) + \\ & \int_{t_0}^t e^{\mathbf{A}(t-s)}\mathbf{G}d\mathbf{W}_i(s) \end{aligned} \quad (2)$$

The five summands of this equation correspond to the five of Equation 1, and give the link between the continuous time model and discrete instantiations of the process. The last summand, the integral of the diffusion over the given time interval, exhibits covariance matrix:

$$\text{cov}\left[\int_{t_0}^t e^{\mathbf{A}(t-s)} \mathbf{G} d\mathbf{W}_i(s)\right] = \int_{t_0}^t e^{\mathbf{A}(t-s)} \mathbf{Q} e^{\mathbf{A}^\top(t-s)} ds = \text{irow}\left(\mathbf{A}_{\#}^{-1} [e^{\mathbf{A}_{\#}(t-t_0)} - \mathbf{I}] \text{row}(\mathbf{Q})\right) \quad (3)$$

Where $\mathbf{A}_{\#} = \mathbf{A} \otimes \mathbf{I} + \mathbf{I} \otimes \mathbf{A}$, with \otimes denoting the Kronecker-product, row is an operation that takes elements of a matrix rowwise and puts them in a column vector, and irow is the inverse of the row operation.

The process vector $\boldsymbol{\eta}_i(t)$ may be directly observed or latent with measurement model

$$\mathbf{Y}_i(t) = \boldsymbol{\Gamma}_i + \boldsymbol{\Lambda} \boldsymbol{\eta}_i(t) + \boldsymbol{\delta}_i(t), \quad \text{where } \boldsymbol{\delta}(t) \sim N(\mathbf{0}, \boldsymbol{\Theta}), \quad \text{and } \boldsymbol{\Gamma} \sim N(\boldsymbol{\tau}, \boldsymbol{\epsilon}) \quad (4)$$

where c -length vector $\boldsymbol{\tau}$ is the expected value of $\boldsymbol{\Gamma}_i$, which is distributed across subjects according to covariance matrix $\boldsymbol{\epsilon} \in \mathbb{R}^{c \times c}$ (referred to later as *manifest traits* – see Section 7.1.1). $\boldsymbol{\Lambda} \in \mathbb{R}^{c \times v}$ is a matrix of factor loadings, $\mathbf{Y}_i(t) \in \mathbb{R}^c$ is a vector of manifest variables, and residual vector $\boldsymbol{\Theta} \in \mathbb{R}^c$ has covariance matrix $\boldsymbol{\delta}_i \in \mathbb{R}^{c \times c}$.

2.1. Continuous time and SEM

Continuous time models have already been implemented as structural equation models, using either non-linear algebraic constraints (Oud and Jansen 2000) or linear approximations of the matrix exponential (Oud 2002). Our formulation uses either the SEM RAM (reticular action model) specification as per McArdle and McDonald (1984), or the state space form recently added to **OpenMx** (Neale *et al.* 2015; Hunter 2014). For details on the equivalence and differences between SEM and state space modelling techniques, see Chow, Ho, Hamaker, and Dolan (2010). **ctsem** translates user specified input matrices and switches into an **OpenMx** model consisting of continuous time parameter matrices, algebraic transformations of these matrices to aid optimization (See Section 6), and algebraic transforms from the continuous time parameters to discrete time parameters for every unique time interval. Expectation matrices are then generated for each individual according to the specified inputs, constraints, and observed timing data. Optimization using either row-wise full information maximum likelihood or the Kalman filter within **OpenMx** is used to estimate the parameters.

To see exactly how the various matrices are transformed into a RAM SEM, one may run the following code after **ctsem** is installed (Section 3). This example comprises two latent processes, three observed indicators, a time dependent predictor, and two time independent predictors, across three time points of observation.

```
R> data('datastructure')
R> datastructure
R> semModel<-ctModel(n.latent=2,n.manifest=3, TRAITVAR='auto', n.TIpred=2,
+   n.TDpred=1, Tpoints=3, LAMBDA=matrix(c(1,'lambda21', 0, 0,1,0),nrow=3))
R> semFit<-ctFit(datastructure, semModel, nofit=T)
R> semFit$mxobj$A$labels
R> semFit$mxobj$S$labels
```

```
R> semFit$mxobj$M$labels
R> semFit$mxobj$F$values
```

For more detailed information on the specification of continuous time structural equation models, the reader is referred to [Oud and Jansen \(2000\)](#); [Arnold \(1974\)](#); [Singer \(1998\)](#); [Voelkle *et al.* \(2012\)](#). Note that while earlier incarnations of continuous time modelling focused on approaches to implement the matrix exponential, **OpenMx** now includes a form of the exponential recommended in computational contexts, the scaling and squaring approach with Pade approximation ([Higham 2009](#)), which has been implemented in **ctsem** accordingly.

3. ctsem package overview and installation

As **ctsem** is an R package, it requires R to be installed, available from www.r-project.org ([R Core Team 2014](#)). The R package **OpenMx** ([Neale *et al.* 2015](#)) is required, and although it will be installed automatically via CRAN if necessary, it is recommended to download it from <http://openmx.psyc.virginia.edu/>. **ctsem** is available via CRAN, so to install and load within R simply use:

```
R> install.packages("ctsem")
R> library("ctsem")
```

Estimating continuous time models via **ctsem** comprises four steps: First, the data must be adequately prepared (Section 4). Then, the continuous time model must be specified by creating a **ctsem** model object using the function **ctModel** (Sections 5 and 7). After specification, the model must be fit to the data using the function **ctFit**, after which **summary** and **plot** methods may be used to examine parameter estimates, standard errors, and fit statistics (Section 6). We will discuss these steps in the following.

4. Data structure

The internal functions of **ctFit** use data in a wide layout, with all data for each individual in a single row, including the time intervals between measurement occasions for this individual. Because this is the format used internally when fitting, for the sake of transparency it is also required as the input format, and is detailed below in Section 4.1. In some cases it may however be simpler to maintain data in a long format, and use the **ctLongToWide** and **ctIntervalise** functions we provide to convert from long format with absolute times to wide format with time intervals. This functionality is discussed in Section 4.2. The choice of time scale and treatment of the initial time point can influence results and will be discussed in Section 4.3, though first time users may find it easier to return to later.

4.1. Wide format

This is the data format required when fitting a model with **ctsem**. The example data below depicts two individuals, observed at three occasions, on three manifest variables, one time dependent predictor, and two time independent predictors. A corresponding path diagram of one possible model for this data is shown in Figure 2. The data are ordered into blocks as

follows: Manifest process variables, time dependent predictors, time intervals, time independent predictors. Manifest variables are grouped by *measurement occasion* and ordered within this by *variable*. In the example there are three manifest variables (Y1, Y2, Y3) assessed across three measurement occasions. In this case, the first three columns of the data (Y1_T0, Y2_T0, Y3_T0) represent the three manifest variables at the first measurement occasion, time point 0, followed by the columns of the second measurement occasion and so on. Note that measurement occasions subsequent to the first may occur at different times for different individuals. Also note the naming convention, wherein the variable name is followed by an underscore and T, followed by an integer denoting the measurement occasion, beginning at T0. After the manifest variables, any time dependent predictors (there need not be any) are grouped by *variable* and ordered within this by *measurement occasion*. This change of ordering compared to the dependent variables reflects the fact that relations between exogenous predictors are not of interest. If they are, then they should instead be included as additional latent processes. Note also that in continuous time modelling a cause must always precede an effect in time, precluding instantaneous effects. For this reason, no time dependent predictors may be included at the last measurement occasion, because there would be no time for an effect to occur. In the data below and the model in Figure 2, there is only one time dependent predictor, TD1, though a second could be added by inserting its two columns directly after TD1_T1). After the time dependent predictors, *T-1* time intervals are specified in chronological order, with column names dT followed by the number of the measurement occasion occurring *after* the interval. That is, dT1 refers to the time interval between the first measurement occasion, T0, and the second, T1. In continuous time modelling it is imperative to know the time point at which an observation takes place. Thus, while missing values on observed scores are no problem, missing values on time intervals are not allowed. Finally, two time independent predictors (TI1, TI2 – the naming here is only with variable names) are contained in the last two columns of the data structure.

	Y1_T0	Y2_T0	Y3_T0	Y1_T1	Y2_T1	Y3_T1	Y1_T2	Y2_T2	Y3_T2	TD1_T0	TD1_T1	dT1	dT2	TI1	TI2
1	2.5	NA	2.2	2.3	5.1	2.3	4.8	3.9	3.7	0	6.0	4	9	-0.6	-0.6
2	5.6	3.7	5.0	NA	7.0	4.4	2.5	4.6	4.7	0	5.3	1	14	-0.5	-0.2

4.2. Conversion from long format with absolute times

Although **ctsem** uses the wide format as default data input, often data are stored in long format, that is, each subject has multiple rows of data, with each row reflecting a particular measurement occasion. In addition, time intervals may not be readily available at the individual level, instead the *absolute time* when a measurement took place is recorded. To convert from long format, the data must contain a subject identification column, columns for every observed variable, and a time variable. Unlike for the wide format data, at this point additional unused variables in the long structure are no problem. In the example below, three manifest variables of interest (Y1, Y2, Y3) have been observed across a number of occasions, along with one time dependent predictor (TD1) and two time independent predictors (TI1, TI2). The variable 'Time' contains the time when the measurement took place (e.g., in weeks from the beginning of the study).

	subject	Y1	Y2	Y3	TD1	Time	TI1	TI2
[1,]	1	3.13	NA	4.59	0.32625	0	NA	-0.609

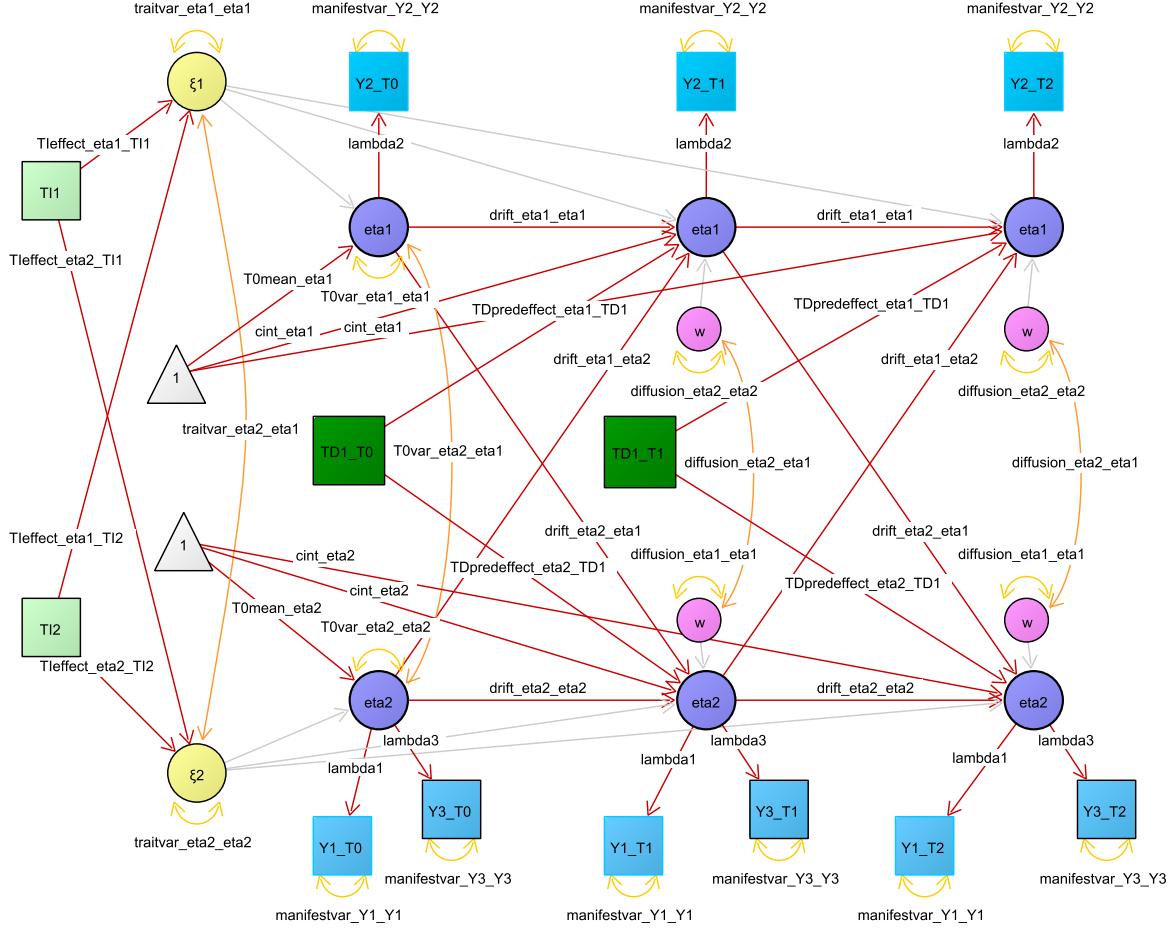


Figure 2: The first three time points of a two process continuous time model, with three manifest indicators (blue) measuring 2 latent processes (purple), one time dependent predictor (dark green), and two time independent predictors (light green). Variance / covariance paths are in orange, regressions in red. Light grey paths indicate those that are constrained to a function of other parameters. Note that the value of parameters for all paths to latents at time 2 and higher do not directly represent the effect, rather, the effect depends on a function including the shown parameter and the time interval Δt . Covariances between the time dependent predictor and traits (yellow) are not drawn.

[2,]	1	2.30	5.11	2.31	-0.00972	1	-0.607	-0.609
[3,]	1	3.85	4.45	NA	NA	NA	NA	NA
[4,]	1	3.05	3.02	3.11	-0.26912	2	-0.607	-0.609
[5,]	2	5.26	6.06	5.55	0.07493	3	-0.529	-0.233
[6,]	2	5.68	5.64	7.96	-0.63566	4	-0.529	-0.233
[7,]	2	4.68	5.43	4.79	0.26527	5	-0.529	-0.233

Given the specific wide structure required by **ctsem**, and that the time points of measurement may vary across individuals, restructuring from long to wide can be complicated, so we have included functions to manage this. First, the long format data with information on the absolute time of measurement must be converted to the wide format, using the **ctLongToWide** function (The number of Tpoints in the generated data is also messaged to the user at this point, to be used in the next step). Then, subject specific time intervals based on the absolute time information must be generated, using the function **ctIntervalise**. One should take care that the defaults used by **ctIntervalise** for structuring the data and handling missing time information are appropriate.¹

```
R> data("longexample")
R> wideexample <- ctLongToWide(datalong = longexample, id = "subject",
+   time = "Time", manifestNames = c("Y1", "Y2", "Y3"),
+   TDpredNames = "TD1", TIpredNames = c("TI1", "TI2"))
R> wide <- ctIntervalise(datawide = wideexample, Tpoints = 3, n.manifest = 3,
+   n.TDpred = 1, n.TIpred = 2, manifestNames = c("Y1", "Y2", "Y3"),
+   TDpredNames = "TD1", TIpredNames = c("TI1", "TI2") )
```

4.3. Choice of initial time point and time scale

Choice of initial time point: Pre-determined or stationary?

An important aspect of continuous time modelling is the choice of how to handle the initial time point. In principle, there are two different ways to do so. One approach is to treat the first time point as *predetermined*, where no assumptions are made about the process prior to the initial time point. In this case, parameters regarding the initial latent variable (latent means and variances, and effect of predictors) are freely estimated. This is the default in **ctsem**, though requires some constraining if fitting a single individual.² When treating the first time point as predetermined, it is important to choose a meaningful starting point, as the process will gradually transition from the variances and means of the initial parameters, towards those of the parameters when the model is stationary. In principle, the initial time point does not have to reflect the first measurement occasion, and can also be set to any time prior. For example it may be of interest to set T0 to the beginning of the school year, although

¹By default, when timing information is missing, variables measured at that time are also set to NA for the individual missing the information. Once this is done the actual time of measurement no longer influences parameter estimates or likelihood, so we can set it to an arbitrary minimum interval. By default, the **mininterval** argument to **ctIntervalise** is set to .001. This argument must be set *lower* than the minimum time interval recorded in the data, so that later observations can be adjusted without problems.

²Either T0VAR or T0MEANS must be fixed, see Section 7.3.

the first measurement was only taken two weeks after start of school. This can be specified using the `startoffset` argument to `ctIntervalise`, specifying the amount of time prior to the first observed measurement occasion. The other approach is to assume a stationary model, that is, a model where the first observations are merely random instantiations of a long term process with time-invariant mean and variance expectations. Or, put another way, we assume that sufficient time has elapsed from the unobserved, hypothetical start of the process to our first measurement occasion, such that whatever the start values were, they no longer influence the process. Strictly speaking, this requires an infinite length of time, or a process that began in a stationary state. However, in some practical cases without clear trends in the data it is possible that the improvement in estimation due to the stationarity assumption outweighs related losses (this may also be tested). To implement the stationarity assumption the means and variances of the first measurement occasion are constrained according to the model predicted means and variances across all time points. This is specified by including a character vector of the T0 matrices to constrain in the `ctFit` arguments: `stationary = c("TOVAR", "TOMEANS")` constrains both means and variances to stationarity. The `ctModel` specification of any matrices that are constrained to stationarity is ignored. Note that any between-subject variance parameters, factor loadings, manifest residuals, as well as drift and diffusion parameters, are inherently stationary (given the configuration of *ctsem*). More complex model specification within *ctsem*, or direct modification of the generated **OpenMx** model, is necessary for modelling time variability in the parameters.

Choice of time scale: Individual or sample relative time?

An additional consideration when treating the first time point as predetermined is necessary in cases of individually varying time intervals. Here, two alternatives need to be distinguished. The default option is to treat the observation times as *relative to the individual*, the other is to treat them as *relative to the sample*. When we treat time as relative to the individual, the first observation of every individual is set to measurement occasion T0, even though different individuals may have been recorded many years apart. However if we treat time as relative to the sample, every individual's observation times are set relative to the very first observation in the entire sample. This may result in a larger and sparser data matrix, potentially with only a single observation at the first measurement occasion. To specify sample relative time when converting from absolute time to intervals, set the argument `individualRelativeTime = FALSE` in the `ctIntervalise` function. The choice between the individual or sample relative time may influence parameter estimates when the processes are not stationary. One way of deciding between the two may be to observe whether the changes of the individuals' processes is more closely aligned with the sample relative or individual relative time. The change in processes may be more aligned with individual relative time when we expect that the activity of measurement relates to changes in the process. Consider for instance the relation between abstinence behaviour and mood among individuals attending an alcohol addiction clinic. Different individuals may come and go from the clinic over many years, but the mean level of abstinence is likely related to when each individual began attending the clinic and being measured – not the specific date the observation took place. In contrast, sample relative time could be more appropriate for a study of linguistic abilities in a cohort of schoolchildren over the years, with some individuals observed early and some only observed later, once they are older and more developed. In this case, we may expect changes in the average linguistic ability related to sample time. Another example that becomes conveniently available with

continuous time models and these functions is to arrange the data in individual relative fashion but using age as the timing variable. In this case, age-related developmental trajectories may be studied. When considering these options one should be aware that consistent up or down trends over time may confound dynamic parameter estimates, if the innovation (latent residual) at t is correlated with the process at $t - 1$. Pre-processing approaches that remove trend components, such as controlling for age or year, removing a linear trend, or differencing scores, *may* provide some check on model estimates, but the ramifications of these should be carefully considered. Alternatively one may wish to explicitly model the diffusion process, discussed in Section 7.5.

5. Model specification

Continuous time models are specified via the `ctModel` function. This function takes as input a series of arguments and parameter matrices, and outputs a list object containing matrices to be later evaluated by the `ctFit` function. The `ctModel` function contains many defaults that should be generally applicable and safe, in that most parameters are specified to be freely estimated, with a few exceptions.³ However, as with all default settings, they should be checked as they may not be applicable. The arguments to the `ctModel` function and the relation to equations in Section 2 are shown in Table 1 (required specification) and Table 2 (optional specification). The matrices can be specified with either character labels, to indicate free parameter names, or numeric values, which indicate fixed values. A mixture of both in one matrix is fine. These generally need to be set when constraining parameters to equality (same character label), when fixing certain parameters to specific values (for instance, when you do not wish to have a certain parameter in the model, or when testing if an effect is different from 0), or when assigning non-standard names to output parameters.

An example model specification relying heavily on the defaults is:

```
R> examplemodel <- ctModel(n.latent = 2, n.manifest = 2, Tpoints = 3,
+   LAMBDA = diag(2))
```

A visual representation of this model is shown in Figure 3. With `n.latent = 2`, we have specified a model with 2 latent processes, shown in purple. Each of these is measured by a single manifest indicator (in blue), for a total of 2 manifest variables, specified with `n.manifest = 2`. Loadings between latents and manifests are fixed to 1.00 (indicated by the 2×2 diagonal LAMBDA matrix) at 3 measurement occasions, specified by `Tpoints = 3`. Because no other parameters are specified, the model defaults are used, resulting in a bivariate latent process model where each manifest variable has a measurement error variance (manifestvar_Y1_Y1, manifestvar_Y2_Y2), and a mean fixed to 0. The initial latent variables of each process each have a freely estimated mean (T0mean_eta1, T0mean_eta2), variance (T0var_eta1_eta1, T0var_eta2_eta2), and covariance (T0var_eta2_eta1). Subsequent latent variables of each process all have an innovation term, with the variance dependent on a function of the diffusion matrix (variances diffusion_eta1_eta1, diffusion_eta2_eta2, covariance

³`ctModel` defaults that *may* not be considered safe, as they are not freely estimated, are the MANIFEST-MEANS, TRAITVAR and MANIFESTTRAITVAR matrices. These were set to ensure that the defaults are appropriate also for single indicator and $N = 1$ cases, and because generally only one of the two trait matrices can be set at once. See Section 7.3 regarding manifest means, and Section 7.1.1 regarding the trait matrices.

Argument	Sign	Meaning
n.manifest	c	Number of manifest indicators per individual at each measurement occasion.
n.latent	v	Number of latent processes.
Tpoints		Number of time points, or measurement occasions, in the data.
LAMBDA	Λ	n.manifest \times n.latent loading matrix relating latent to manifest variables.

Table 1: Required arguments for `ctModel`.

Argument	Sign	Default	Meaning
manifestNames		Y1, Y2, etc	n.manifest length character vector of manifest names.
latentNames		eta1, eta2, etc	n.latent length character vector of latent names.
T0VAR		free	lower triangular n.latent \times n.latent Cholesky matrix of latent process initial variance / covariance.
T0MEANS		free	n.latent \times 1 matrix of latent process means at first time point, T0.
MANIFESTMEANS	τ	0	n.manifest \times 1 matrix of manifest means.
MANIFESTVAR	Θ	free diag	lower triangular n.manifest \times n.manifest Cholesky matrix of variance / covariance between manifests (i.e., measurement error).
DRIFT	\mathbf{A}	free	n.latent \times n.latent matrix of continuous auto and cross effects.
CINT	κ	free	n.latent \times 1 matrix of continuous intercepts.
DIFFUSION	\mathbf{Q}	free	lower triangular n.latent \times n.latent Cholesky matrix of diffusion variance / covariance.
TRAITVAR	ϕ_{ξ}	NULL	NULL if no trait variance, or lower triangular n.latent \times n.latent Cholesky matrix of trait variance / covariance.
MANIFESTTRAITVAR	ϵ	NULL	NULL if no trait variance on manifest indicators, or lower triangular n.manifest \times n.manifest Cholesky matrix.
n.TDpred	l	0	Number of time dependent predictors in the dataset.
TDpredNames		TD1, TD2, etc	n.TDpred length character vector of time dependent predictor names.
TDPREDMEANS		free	n.TDpred \times (Tpoints-1) rows \times 1 column matrix of time dependent predictor means.
TDPREDEFFECT	\mathbf{M}	free	n.latent \times n.TDpred matrix of effects from time dependent predictors to latent processes.
T0TDPREDCOV		free	n.latent \times ((Tpoints-1) \times n.TDpred) covariance matrix between latents at T0 and time dependent predictors.
TDPREDVAR		free	lower triangular (n.TDpred \times (Tpoints-1)) \times (n.TDpred \times (Tpoints-1)) Cholesky matrix for time dependent predictors variance / covariance.
TRAITTDPREDCOV		free	n.latent rows \times (n.TDpred \times (Tpoints-1)) columns covariance matrix for latent traits and time dependent predictors.
TDTIPREDCOV		free	(n.TDpred \times (Tpoints-1)) rows \times n.TIpred columns covariance matrix between time dependent and independent predictors.
n.TIpred	p	0	Number of time independent predictors.
TIpredNames		TI1, TI2, etc	n.TIpred length character vector of time independent predictor names.
TIPREDMEANS		free	n.TIpred \times 1 matrix of time independent predictor means.
TIPREDEFFECT	\mathbf{B}	free	n.latent \times n.TIpred effect matrix of time independent predictors on latent processes.
T0TIPREDEFFECT		free	n.latent \times n.TIpred effect matrix of time independent predictors on latents at T0.
TIPREDVAR		free	lower triangular n.TIpred \times n.TIpred Cholesky matrix of time independent predictors variance / covariance.
startValues		NULL	a named vector, where the names of each value must match a parameter in the specified model, and the value sets the starting value for that parameter during optimization.

Table 2: Optional arguments for `ctModel`.

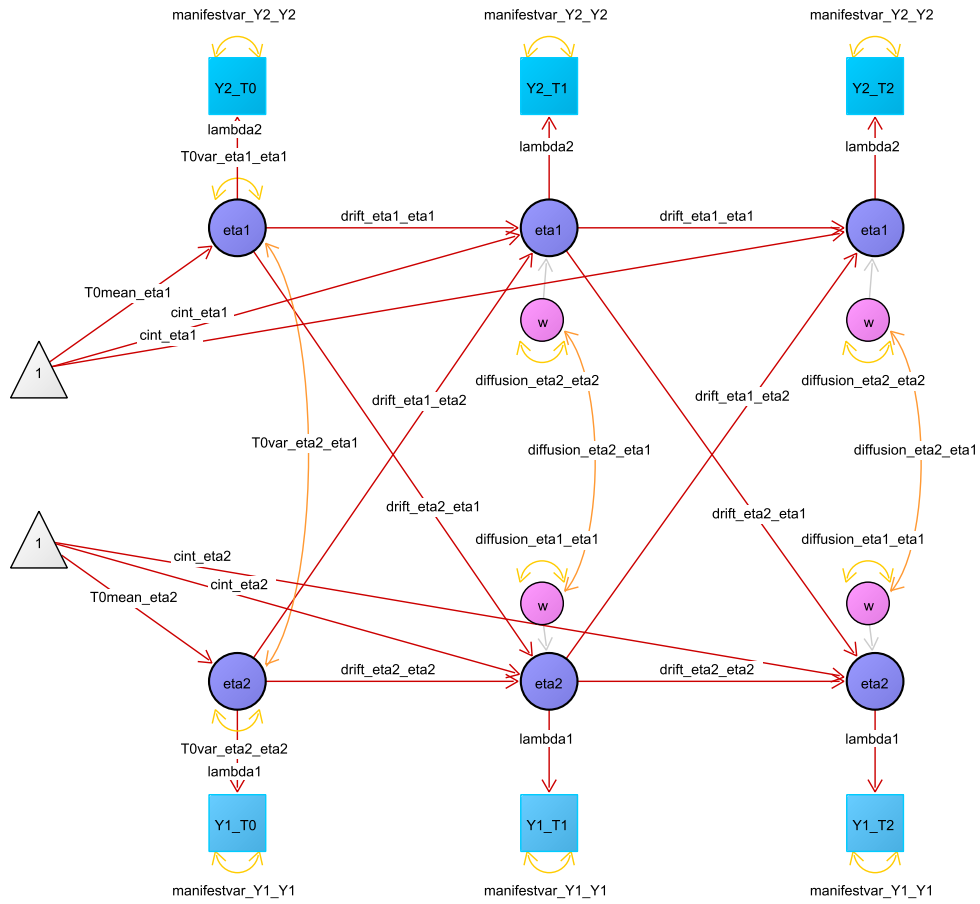


Figure 3: A two process continuous time model with manifest indicators (blue) measuring latent processes (purple). Variance / covariance paths are in orange, regressions in red. Light grey paths indicate those that are either fixed to certain values or constrained to other parameters. Note that the value of the parameters for all paths to latents at time 2 and higher do not directly represent the effect, rather, the effect depends on a function of the shown parameter and the time interval Δt . This model includes neither observed or unobserved between person variance, nor any time dependent predictors.

diffusion_eta2_eta1), drift matrix, and time interval Δt (Note that although we speak here of variance and covariance parameters for the sake of intuitive understanding, **ctsem** works with Cholesky decomposed covariance matrices, discussed in Section 5.1). Each latent variable in our two processes has continuous auto effects on itself according to the drift_eta1_eta1 and drift_eta2_eta2 parameters (the diagonals of the drift matrix), and cross effects to the other process according to the drift_eta1_eta2 and drift_eta2_eta1 parameters (the off diagonals). This drift matrix combines with time interval Δt to generate the auto and cross regressions shown in the diagram. As usual, the first process listed in the parameter name represents the row of the drift matrix, and the second the column, with the direction of effects flowing from column to row – so the parameter drift_eta1_eta2 represents the effect of a change in process 2 on later values of process 1. Each process also has a continuous intercept (cint_eta1, cint_eta2), which, in combination with the drift matrix, sets the level to which each process asymptotes. To develop an understanding of the parameter matrices or simply view a model, printing the model object (e.g. `print(examplemodel)`) is recommended. To track how these matrices are used within the complete SEM specification, one must first estimate the model (discussed in Section 6), and may then view the A, S, F or M matrices typical to a RAM specification McArdle and McDonald (1984) via `example1fit$mxobj$A` (for the A matrix).

5.1. Parameter transformations

To ensure reliable estimation, a number of parameter transformations have been implemented in **ctsem**. The logarithm and non-singular transforms may be disabled when running `ctFit` using the argument `transformedParams = FALSE`.

Cholesky decomposed variance / covariance input matrices

Rather than directly operate on covariance matrices, **ctsem** takes as input Cholesky decomposed covariance matrices, as these allow for unbounded estimation. The Cholesky decomposition is such that variance / covariance matrix $\Sigma = LL^T$, where L is lower-triangular. This means that input variance / covariance matrices for **ctsem** must be lower triangular. The meaning of a 0 in the matrix is the same for both covariance and Cholesky decomposition approaches. An important point to be aware of is that while Cholesky matrices are required as input, for convenience, the matrices reported in the `summary` function are full variance / covariance matrices. These can be converted to the Cholesky decomposed form using code in the form `t(chol(summary(ctfitobj)$varcovmatrix))`.

Logarithmic transforms

While not affecting interpretations of the matrix input or output, internally, by default **ctsem** optimizes over the natural logarithm of the diagonal of variance / covariance matrices, and the natural logarithm of the negative diagonal of the DRIFT matrix. These transformations are reflected in the raw **OpenMx** parameter output section of the output summary, but otherwise require no specific knowledge or action – the transformations all take place internally, and the regular DRIFT and variance / covariance matrices are displayed in the summary matrices. The main limitation imposed by these transforms is that DRIFT diagonals are constrained to be negative. Although this should be beneficial for most purposes, if one wishes to estimate an unstable (no asymptote) process, this can still be achieved by augmenting the model specification with one or more additional latents.

Non-singular matrices

To avoid problems with singular matrices, internally, the matrix `negDRIFTlog` 0.00001 added to the diagonal elements, while `DIFFUSIONlogchol` diagonals have .00001 subtracted. This ensures that `DRIFT` diagonals are always negative and `DIFFUSION` diagonals are always positive. When values outside these bounds are input by the user (either as fixed or starting values), the values are adjusted as necessary and the user is informed.

6. Model estimation

The `ctFit` function estimates the specified model, calling the data in wide format along with the `ctsem` model object. For an example, we can fit a similar model to that defined in Section 5. We first load an example dataset contained in the `ctsem` package, then use the `ctFit` function for parameter estimation. Output information can be obtained via the `summary` function. The dataset used in this example, is a simulation of the relation between leisure time and happiness for 100 individuals across 6 measurement occasions. Because our data here does not use the default manifest variable names of `Y1` and `Y2`, but rather `LeisureTime` and `Happiness`, we must include a `manifestNames` character vector in our model specification. Because each manifest directly measures a latent process, we can use the same character vector for the `latentNames` argument, though one could specify any character vector of length 2 here, or rely on the defaults of `eta1` and `eta2`.

```
R> data("ctExample1")
R> example1model <- ctModel(n.latent = 2, n.manifest = 2, Tpoints = 6,
+   manifestNames = c("LeisureTime", "Happiness"),
+   latentNames = c("LeisureTime", "Happiness"), LAMBDA = diag(2))
R> example1fit <- ctFit(datawide = ctExample1, ctmodelobj = example1model)
```

The output of `summary` after fitting such a model includes the matrices representing the continuous time parameters (e.g., `DRIFT`), a list of estimates of only the free parameters, and fit information from the `OpenMx` summary function. Further information can be obtained using the argument `verbose=TRUE`, which will return the raw (by default, transformed) **OpenMx** parameter values and standard errors, as well as additional summary matrices of discrete time transformations for the time interval $\Delta t = 1$ (e.g., `discreteDRIFT`), and when appropriate, asymptotic values for the parameters as the time interval Δt approaches ∞ (e.g., `asymDIFFUSION` may be taken to represent the total within subject variance of a process). When appropriate, standardised matrices are also output with the suffix 'std'.⁴

```
R> summary(example1fit, verbose = TRUE)["discreteDRIFTstd"]
```

```
$discreteDRIFTstd
      LeisureTime Happiness
LeisureTime    0.9728   -0.0499
Happiness     -0.0138    0.9146
```

⁴Standardisations are based on only the relevant variance, not the total. For instance, `DRIFT` parameters are standardised using only the within-subject variance, `asymDIFFUSION`, because `DRIFT` parameters are typically intended to represent individual, or average individual, temporal dynamics.

The output above shows the standardised discrete time equivalent of the DRIFT matrix for time interval $\Delta t = 1$. This is provided for convenience, but one should note that it only represents the temporal effects given the specific interval of 1 unit of time (The specific interval shown for the discrete summary matrices may be modified with the argument `timeInterval`). The unstandardised discrete DRIFT matrix may be calculated from the continuous drift matrix for any desired interval, with the code:

```
R> expm(summary(example1fit)$DRIFT * desiredinterval)
```

See Equation 2 to understand how this arises. From the diagonals of the matrix we see that changes in the amount of leisure time one has tend to persist longer (indicated by a higher autoregression) than happiness. The cross-regression in row 2 column 1 suggests that as leisure time increases, this tends to be followed by *decreases* in happiness. Similarly, the cross-regression in row 1 column 2 suggests that as happiness increases, this tends to be followed by *decreases* in leisure time. While these results are accurate for the specified model, the specified model is likely inappropriate for this data, which we explain more of in Section 7.1.1 on unobserved heterogeneity.

6.1. Comparing different models

Suppose we wanted to test the model we fit above against a model where the effect of happiness on later leisure time (parameter drift_LeisureTime.Happiness) was constrained to 0. First we specify and fit the model under the null hypothesis by taking our previous model and fixing the desired parameter to 0:

```
R> testmodel <- example1model
R> testmodel$DRIFT[1, 2] <- 0
R> testfit <- ctFit(datawide = ctExample1, ctmodelobj = testmodel)
```

The result may then be compared to the original model with a likelihood ratio test, using the **OpenMx** function `mxCompare`. To use this function a base model fit object and a comparison model fit object must be specified, with the latter being a constrained version of the former. Note that **ctsem** stores the original **OpenMx** fit object under a `$mxobj` sub-object, which must be referenced when using **OpenMx** functions directly.

```
R> mxCompare(example1fit$mxobj, testfit$mxobj)
```

	base	comparison	ep	minus2LL	df	AIC	diffLL	diffdf	p
1	ctsem	<NA>	16	4177	1184	1809	NA	NA	NA
2	ctsem	ctsem	15	4197	1185	1827	19.9	1	0.00000833

According to the conventional $p < .05$ criterion, results show that the more constrained model fits the data significantly worse, that is, happiness has a significant effect on later leisure time for this model and data. An alternative to this approach is to estimate likelihood based 95% confidence intervals for our parameters of interest, from our already fit model:

```
R> example1cifit <- ctCI(example1fit, confidenceintervals = "DRIFT")
```

	lbound	estimate	ubound	note
ctsem.DRIFT[1,1]	-0.0468	-0.0280	-0.01333	
ctsem.DRIFT[2,1]	-0.0311	-0.0111	0.00869	
ctsem.DRIFT[1,2]	-0.1083	-0.0697	-0.03776	
ctsem.DRIFT[2,2]	-0.1485	-0.0896	-0.04595	

Now the `summary` function reports 95% confidence bounds for the continuous drift parameters, which in case of `drift_Happiness_LeisureTime` (DRIFT[1,2]) does not include 0. For complicated models, the estimation of confidence intervals may increase computation time considerably. Note that although the standard errors of parameter estimates may be automatically returned via **OpenMx** and displayed via `summary, verbose = TRUE`, likelihood based confidence intervals or model comparisons are recommended for hypothesis testing, because confidence intervals may not be symmetric around the point estimate for many parameters in a continuous time model.

6.2. Plots

A visual depiction of the relationships between the processes over time is given by the `plot` function for any fit object created by `ctFit`. This will show the processes' mean trajectories, within-subject variance, autoregression, and cross regression plots, as well as plots showing expected changes in each process given either an *observed* change of 1.00, or an *exogenous input* of 1.00 (The former is a mixture of the DIFFUSION and DRIFT matrices, while the latter is just an alternative representation of the auto and cross regression plots). Autoregression plots show the impact of a 1 unit change in a process on later values of that process, while cross regression plots show the impact of a 1 unit change in one process on later values of other processes. Some examples can be seen in Figure 4.

7. Continuous time models: extensions

7.1. Unobserved heterogeneity

Traits at the latent level

When modelling panel data, the continuous intercept parameter κ reflects the expected value for continuous time intercept ξ , which determines the average level of a process. In panel data, however, it is common that *individuals* exhibit stable differences in the level. Within **ctsem** we call such stable differences *traits*, but they may also be thought of more abstractly as *unit level* or *between subject* differences, or *unobserved heterogeneity*. When individuals exhibit this trait variance, fitting a model that fails to account for it will result in parameter estimates that will not reflect the processes of individual subjects, but will mix between and within-person information (Balestra and Nerlove 1966; Oud and Jansen 2000; Halaby 2004). To avoid this bias, individual differences can be incorporated in two different ways. One way is to control for observed covariates as will be discussed in Section 7.2.1. However as covariates are likely to be insufficient, one may also estimate the latent trait variance by estimating the

variance and covariance Φ_{ξ} of the intercept parameters ξ across individuals.⁵ In *ctsem*, freely estimated latent trait variances and covariances may be added with the argument `TRAITVAR = "auto"` to the `ctModel` command. If the user is interested in a specific variance-covariance structure, it is of course also possible to specify the $n.\text{latent} \times n.\text{latent}$ lower-triangular matrix of free or fixed parameters by hand. To illustrate the inclusion of trait variance, we fit the same model on simulated leisure time and happiness introduced above, but also model the traits.

```
R> data("ctExample1")
R> traitmodel <- ctModel(n.manifest = 2, n.latent = 2, Tpoints = 6,
+   LAMBDA = diag(2), manifestNames = c("LeisureTime", "Happiness"),
+   latentNames = c("LeisureTime", "Happiness"), TRAITVAR = "auto")
R> traitfit <- ctFit(datawide = ctExample1, ctmodelobj = traitmodel)
```

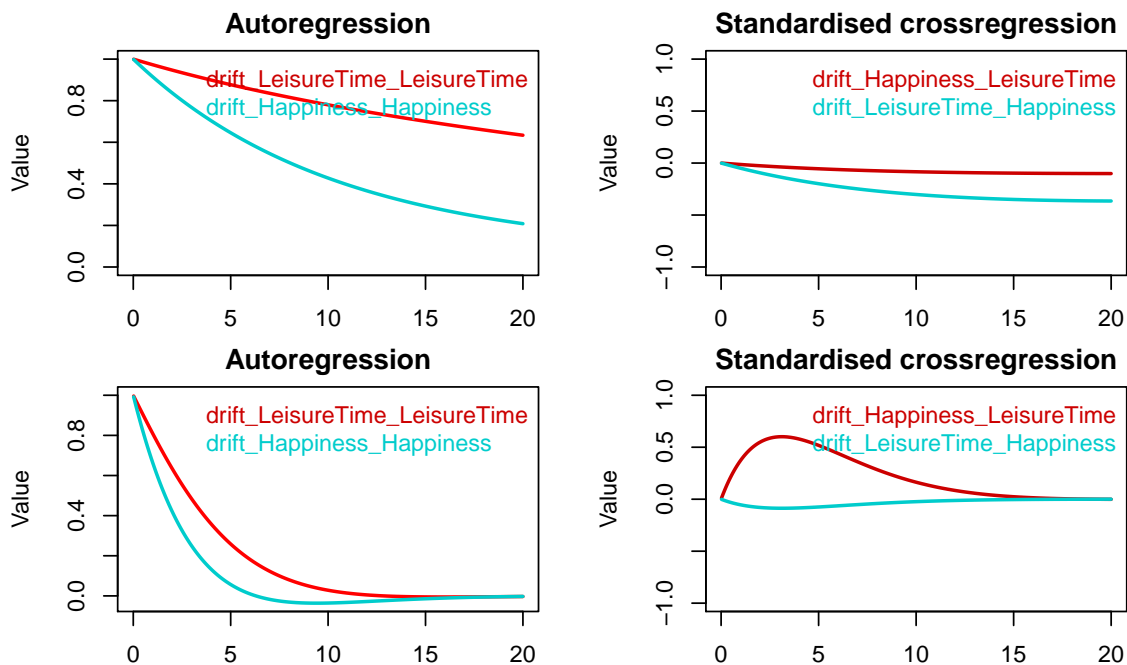


Figure 4: Top row shows parameter plots without accounting for trait variance, bottom row with trait variance accounted for.

From Figure 4, we can see that after accounting for differences in the trait levels of leisure time and happiness, the estimated auto and cross regression effects between latent processes are very different. Auto effects (persistence) have reduced, and the magnitude and sign of the cross effects have switched. Now, rather than a *decrease in leisure time* predicting an *increase in happiness*, after controlling for unobserved heterogeneity we see instead that *increases in leisure time* predict later *increases in happiness*.

⁵Note that this is a substantially different approach to achieve unbiased effect estimates than the *fixed effects* approach (see for example [Mundlak 1978](#)), as our SEM specification, while a *random effects* model which have at times been associated with bias for within effects, allows unbiased estimation of *within* and *between* effects at the same time. For further details on the estimation of unobserved heterogeneity in an SEM context, see [Bollen and Brand \(2010\)](#), and in the continuous time case [Voelkle, Driver, and Oud \(2015\)](#).

Traits at the indicator level

Beyond differences in the level of the latent process, it is also possible that stable individual differences in the level of some or all indicators of a process may exist, and as such may be better accounted for at the measurement level. Take for instance a latent process, happiness, estimated using three survey questions at 10 time points for multiple individuals. The means for question one are fixed to 0 to identify the model, while those for questions two and three are 2.50 and 1.20 respectively. According to the models we have described so far, the estimated (or fixed) manifest means apply equally to all individuals, and deviations from this are taken to represent genuine information about the latent process. However, consider that question three queries happiness with work, which may for some people be consistently high, independent of their actual latent happiness, and for some may be consistently low. Calculating the latent process using the same mean for happiness with work again confounds between and within person information, but we can account for this by using what we will refer to as *manifest traits* – an additional, time invariant variance-covariance structure on the measurement level. These are specified by including the `MANIFESTTRAITVAR` matrix in the `ctModel` specification, either as `MANIFESTTRAITVAR = "auto"` wherein time invariant variance and covariance for all indicators is freely estimated, or the $n.manifest \times n.manifest$ lower-triangular matrix can be specified explicitly as usual. Such a specification may allow for improved fit of factor models, more realistic estimates of the dynamics of individual processes, and the testing of measurement related hypotheses. Note however that identifying restrictions will be necessary for any model that contains both manifest and process level traits – one possible form for this may be a free process level `TRAITVAR` matrix and a `MANIFESTTRAITVAR` matrix that is fixed to 0 across factors, but free within any factors that are measured by more than one indicator.

7.2. Predictors

`ctsem` allows the inclusion of *time independent* as well as *time time dependent* exogenous predictors. Time independent predictors could be variables such as gender, personality or socio-demographic background variables that remain constant over time. An example of a time dependent predictor could be a financial crisis, which all individuals in the sample experience at the same time, or the death of a loved one, which only some individuals may experience and for whom the time point of the event may differ. Both events may be thought of as adding some relatively distinct and sudden change to an individual's life, which influences the processes of interest. Time dependent predictors are distinguished from the endogenous latent processes in that they are assumed to be independent of fluctuations in the processes – changes in the latent processes do not lead to changes in the predictor. Furthermore, no temporal structure between different time points is modelled. Because of these two assumptions, in any case where the time dependent predictor depends on earlier values of either itself or the latent process, it may be better to model it as an additional latent process.

Time independent predictors

Time independent predictors are added by including the data as per the structures shown in Section 4, and specifying the number of time independent predictors, `n.TIpred`, in the `ctModel` arguments. If not using the default variable naming, a `TIpredNames` character vector should also be specified. For an example, we add the ‘number of close friends’ as a time

independent predictor to the earlier leisure time and happiness model. Note that, just like in any conventional regression analysis, if time independent predictors are not centered around 0, the estimate of continuous intercept parameters depends on the mean of the predictor.

```
R> data("ctExample1TIpred")
R> tipredmodel <- ctModel(n.manifest = 2, n.latent = 2, n.TIpred = 1,
+   manifestNames = c("LeisureTime", "Happiness"),
+   latentNames = c("LeisureTime", "Happiness"),
+   TIpredNames = "NumFriends",
+   Tpoints = 6, LAMBDA = diag(2), TRAITVAR = "auto")
R> tipredfit <- ctFit(datawide = ctExample1TIpred, ctmodelobj = tipredmodel)
R>
R> summary(tipredfit, verbose = TRUE)["TIPREDEFFECT"]
R> summary(tipredfit, verbose = TRUE)["discreteTIPREDEFFECT"]
R> summary(tipredfit, verbose = TRUE)["asymTIPREDEFFECT"]
R> summary(tipredfit, verbose = TRUE)["addedTIPREDVAR"]
```

\$TIPREDEFFECT		\$asymTIPREDEFFECT	
	NumFriends		NumFriends
LeisureTime	-0.225	LeisureTime	-1.673
Happiness	0.549	Happiness	0.219

\$discreteTIPREDEFFECT		\$addedTIPREDVAR		
	NumFriends		LeisureTime	Happiness
LeisureTime	-0.239	LeisureTime	2.838	-0.3719
Happiness	0.442	Happiness	-0.372	0.0487

The matrices output from `summary, verbose = TRUE` will now include matrices related to time independent predictors, while the estimated parameters now also includes a range of variance, covariance, and effect parameters for time independent predictors. Matrix `TIPREDEFFECT` displays the continuous time effect parameters, however `discreteTIPREDEFFECT` shows the effect added to the processes for each unit of time, which may provide a useful comparison with discrete time models. `asymTIPREDEFFECT` (Asymptotic time independent predictor effect) shows the expected total increase in process means given an increase of 1 on the time independent predictor. From these matrices we see that the number of close friends has a negative relationship to leisure time, but a positive relationship to happiness. The final matrix, `addedTIPREDVAR`, displays the stable between-subject variance and covariance in the processes accounted for by the time independent predictors.

Time dependent predictors

ctsem allows the specification of time dependent predictors: The fundamental form of such a predictor is that of a sudden impulse to the system which then dissipates back to the process mean, however with some thought it is possible to specify a wide range of effect shapes. Figure 5 provides an example of two different extremes, the basic impulse form and a permanent level change form.

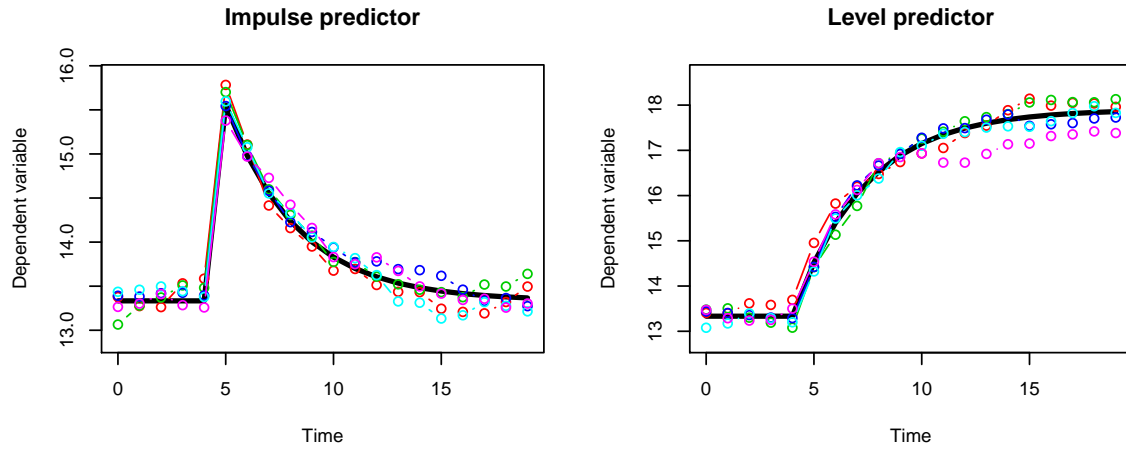


Figure 5: Two shapes of time dependent predictors: both plots show 5 selected individuals data, all experiencing a time dependent predictor at time point 5. The model-based expected trajectory of the predictor effect (including autoregression) is also shown as a solid black line. On the left, the processes spike up and then dissipate, reflecting a transient change, or *impulse*. On the right, the processes trend upwards towards a new equilibrium, reflecting a stable change in the *level*.

A single time dependent predictor can be incorporated in a **ctsem** model by adding the argument `n.TDpred = 1` to the `ctModel` function, as well as a `TDpredNames` vector if not using the default variable naming in your data, then fitting as usual. In the following example, we use the same two simulated processes as above and include an intervention that all individuals experience at time 5. For example, let us assume everyone receives a large amount of money and we are interested in the impact of this monetary gift on leisure time and happiness. We expect that some short term increase in both leisure time and happiness may occur, as people may take holidays or enjoy the unexpected boon otherwise, but we also want to check whether the gift we provide may also cause a longer term adjustment in leisure time or happiness. To this end we first fit a model with the basic impulse effect, coded in the data as a 1 when the intervention occurs and a 0 otherwise.⁶ To aid estimation, because we know that our intervention was neither related to individuals *initial* (T0) levels, or their *average* levels over time (TRAITVAR), we fix the relevant covariance matrices (T0TDPREDCOV and TRAITTDPREDCOV) to 0.

```
R> data("ctExample2")
R> tdpredmodel <- ctModel(n.manifest = 2, n.latent = 2, n.TDpred = 1,
+   Tpoints = 8, manifestNames = c("LeisureTime", "Happiness"),
+   TDpredNames = "MoneyInt", latentNames = c("LeisureTime", "Happiness"),
+   T0TDPREDCOV = matrix(0, nrow = 2, ncol=7),
+   TRAITTDPREDCOV = matrix(0, nrow = 2, ncol=7),
+   LAMBDA = diag(2), TRAITVAR = "auto")
```

⁶While this form of dummy coding works well, if there are predictors with no variance and the TDPREDVAR matrix is not specified, **ctsem** warns the user and fixes TDPREDVAR to a diagonal 0.01 matrix.

```
R> tdpredfit <- ctFit(datawide = ctExample2, ctmodelobj = tdpredmodel)
R>
R> summary(tdpredfit, verbose = TRUE)["TDPREDEFFECT"]
R> summary(tdpredfit, verbose = TRUE)["discreteTDPREDEFFECT"]
```

\$TDPREDEFFECT		\$discreteTDPREDEFFECT	
	MoneyInt		MoneyInt
LeisureTime	0.633	LeisureTime	0.558
Happiness	0.742	Happiness	0.464

The matrices reported from `summary(tdpredfit, verbose = TRUE)` will now include those related to the time dependent predictor, and the parameters section will include all the additional free parameters estimated, including many variance and covariance related parameters, and the effect parameters `TDpred_LeisureTime_MoneyInt` and `TDpred_Happiness_MoneyInt`. Looking at the summary matrices, `TDPREDEFFECT` shows us the initial impact, and `discreteTDPREDEFFECT` shows the impact remaining after 1 unit of time. From the matrices, we can see that the monetary intervention relates directly to subsequent increases in leisure time, with also an additional direct effect on happiness. Standardised estimates are not provided because we assume no model for the variance of time dependent predictors.

Adding a level change predictor

To test the longer term changes introduced via the monetary intervention, we must model the impact of the predictor via an intermediate latent process: We fix the intercepts (`T0MEANS` and `CINT`) and random variance (`T0VAR`, `DIFFUSION`, and `TRAITVAR`) of this additional process to 0; set changes to persist indefinitely via a diagonal `DRIFT` value of 0; fix the impact of the predictor on the new process to 1 (to identify the effect); fix the impact of the two original latent processes on the new process to 0 (via the off-diagonals in the third row of `DRIFT`); and estimate the impact of the additional process on our original two processes of interest (via the off-diagonals in the third column of `DRIFT`). Alternatively, one could also estimate the time course of predictor effects by freeing the `DRIFT` diagonal of the additional process.

```
R> data("ctExample2")
R> tdpredlevelmodel <- ctModel(n.manifest = 2, n.latent = 3, n.TDpred = 1,
+   Tpoints = 8, manifestNames = c("LeisureTime", "Happiness"),
+   TDpredNames = "MoneyInt",
+   latentNames = c("LeisureTime", "Happiness", "MoneyIntLatent"),
+   TOTDPREDCOV = matrix(0, nrow = 3, ncol = 7),
+   TRAITTDPREDCOV = matrix(0, nrow = 3, ncol = 7),
+   LAMBDA = matrix(c(1,0, 0,1, 0,0), ncol = 3), TRAITVAR = "auto")
R>
R> tdpredlevelmodel$TRAITVAR[3, ] <- 0
R> tdpredlevelmodel$TRAITVAR[, 3] <- 0
R> tdpredlevelmodel$DIFFUSION[, 3] <- 0
R> tdpredlevelmodel$DIFFUSION[3, ] <- 0
```



```

R> tdpredlevelmodel$TOVAR[3, ] <- 0
R> tdpredlevelmodel$TOVAR[, 3] <- 0
R> tdpredlevelmodel$CINT[3] <- 0
R> tdpredlevelmodel$TOMEANS[3] <- 0
R> tdpredlevelmodel$TDPREDEFFECT[3, ] <- 1
R> tdpredlevelmodel$DRIFT[3, ] <- 0
R>
R> tdpredlevelfit <- ctFit(datawide = ctExample2,
+   ctmodelobj = tdpredlevelmodel)
R>
R> summary(tdpredlevelfit, verbose = TRUE)["DRIFT"]

$DRIFT
               LeisureTime Happiness MoneyIntLatent
LeisureTime    -0.2284    -0.0317         0.07430
Happiness         0.0427    -0.4563        -0.04648
MoneyIntLatent   0.0000     0.0000        -0.00001

R> summary(tdpredlevelfit, timeInterval = 20,
+   verbose = TRUE)["discreteTDPREDEFFECT"]

$discreteTDPREDEFFECT
               MoneyInt
LeisureTime      0.3376
Happiness        -0.0699
MoneyIntLatent    0.9998

```

Now, if we look at column 3 of the DRIFT matrix, we see that the monetary intervention process appears to cause long term increases in leisure time, but potentially reductions in happiness. The discreteTDPREDEFFECT matrix for a time interval of 20 shows the total expected effect of the predictor (both the impulse and level component) on the processes, and these effects can also be seen in the means when plotting.

7.3. $N = 1$ time series with multiple indicators

In the examples so far, we have dealt with multiple individuals with relatively few measurement occasions, and latent processes have been estimated by a single indicator. However, **ctsem** may also be used for the analysis of time series data for single subjects observed at many measurement occasions, as well as the estimation of latent factors estimated from multiple indicators. With single-subject data, a Kalman filter implementation is typically far quicker than the matrix arrangement we use for multiple subjects, however **ctsem** allows either to be used. To illustrate these features, we perform a dynamic factor analysis on a single individual, with three manifest indicators measured at 50 occasions. Because the model is fitted to a single individual, we cannot freely estimate both the latent variance and mean at the first measurement occasion, but we must fix the 1×1 TOVAR matrix to a reasonable value, or implement stationarity constraints as discussed in Section 4.3. The precise fixed value becomes unimportant as the time series length increases (Durbin and Koopman 2012).

Note that in this example the LAMBDA matrix specifies a loading of 1.00 for manifest Y1, while loadings for Y2 and Y3 are freely estimated. Similarly, the mean for Y1 is fixed to 0, with the others free (by default these would be fixed to 0, but this may be too restrictive for a factor model). These constraints serve to identify the measurement model without further constraining it. Note also that although *ctsem* uses the Kalman filter by default when a single subject is specified, this can be overridden by specifying the `objective = "mxRAM"` argument to `ctFit`, if one wishes to use the slower RAM implementation. The Kalman filter may also be specified for multiple subjects. In this case, between subject trait or time independent predictor matrices are ignored – one may need to account for consistent differences between subjects through pre-processing or thoughtful expansion of the state matrices.

```
R> data("ctExample3")
R> model <- ctModel(n.latent = 1, n.manifest = 3, Tpoints = 100,
+   LAMBDA = matrix(c(1, "lambda2", "lambda3"), nrow = 3, ncol = 1),
+   MANIFESTMEANS = matrix(c(0, "manifestmean2", "manifestmean3"), nrow = 3,
+     ncol = 1))
R> fit <- ctFit(data = ctExample3, ctmodelobj = model, objective = "Kalman",
+   stationary = c("TOVAR"))
```

7.4. Multiple group continuous time models

In some cases, certain groups or individuals may exhibit different model parameters. We can investigate group or individual level differences by specifying a multiple group model using the `ctMultigroupFit` function. For this example, we will use the same model structure as in the single subject example from Section 7.3, but apply it to two groups of 10 individuals, whom we expect to exhibit differences in the loading of the third manifest variable. When using `ctMultigroupFit`, all parameters are free across groups by default. However, in addition to the standard model specification you may also specify either a *fixed model*, or a *free model*. A fixed model should be of the same structure as the base model, with any parameters you wish to constrain across groups set to the character string ‘groupfixed’. The value for any other parameters is not important. Alternatively, one may specify a free model, where any parameters to freely estimate for each group are given the label ‘groupfree’, and all others will be constrained across groups. In this example, because we only want to examine group differences on one parameter, we specify a free model in which the loading parameter between manifest3 and our latent process eta1 is labelled ‘groupfree’ – this estimates distinct lambda3 parameters for each group, and constrains all other parameters across the two groups to equality. The group specific parameter estimates will appear in the resulting summary prefixed by the specified *grouping vector*. This is the final requirement for `ctMultigroupFit` and is simply a vector specifying a group label for each row of our data. In this case we have groups one and two, containing the first and the last 10 rows of data respectively, prefixed by the letter ‘g’ to denote group.

```
R> data("ctExample4")
R>
R> basemodel <- ctModel(n.latent = 1, n.manifest = 3, Tpoints = 20,
+   LAMBDA = matrix(c(1, "lambda2", "lambda3"), nrow = 3, ncol = 1),
```

```

+   TRAITVAR="auto", MANIFESTMEANS = matrix(c(0, "manifestmean2",
+       "manifestmean3"), nrow = 3, ncol = 1))
R>
R> freemodel <- basemodel
R> freemodel$LAMBDA[3, 1] <- "groupfree"
R> groups <- paste0("g", rep(1:2, each = 10))
R>
R> multif <- ctMultigroupFit(datawide = ctExample4, groupings = groups,
+   ctmodelobj = basemodel, freemodel = freemodel)

g1_lambda3 g2_lambda3
      1.417      0.208

```

Looking at the estimated parameters from the `$omxsummary` (**OpenMx**) portion of `summary`, `verbose = TRUE`, we indeed see a difference between parameters `g1_lambda3` (group 1) and `g2_lambda3` (group 2), and could test this with the usual approaches discussed in Section 6.1. A point to note is that the multiple group and Kalman filter implementations can be easily combined by specifying a distinct group for each row of data. This can allow for a mixture of individual and group level parameters.

7.5. Dynamics on the diffusion process and simulating data

In the models discussed so far, the latent error term was independent over time. However, what about a situation where we have variables which show very slow patterns of change, upwards or downwards trajectories that are maintained over many observations? In exactly the same way as the expected value of the *process* depends on prior values, in such a situation the expected value of the *innovation* would also be predictable based on prior values, rather than always 0. This can provide for oscillations and slower patterns of change, as for example with damped linear oscillators, or moving average like effects as from the ARMA modelling framework.

Continuous time models of this variety are theoretically plausible, as changes to the level of a process are not necessarily always random in direction, but may depend on contextual circumstances that have some persistence. Consider an individual's overall health over the course of 20 years, sampled every few months. If the individual changes exercise or eating habits, changes in health do not manifest instantly, rather we could expect either a slow increase or slow reduction, depending on whether the change of habits was positive or negative. Thus, for many measurements, the change in health from the previous measurement will likely be in the same direction as the change was one step earlier. The following details how to specify such a model, generate data using the `ctGenerate` function, simply plot the generated data, and estimate the parameters.

```

R> genm <- ctModel(Tpoints = 200, n.latent = 2, n.manifest = 1,
+   LAMBDA = matrix(c(1, 0), nrow = 1, ncol = 2),
+   DIFFUSION = matrix(c(0, 0, 0, 1), 2),
+   MANIFESTVAR = diag(.6, 1),
+   DRIFT = matrix(c(0, -.1, 1, -.2), nrow = 2),
+   CINT = matrix(c(1, 0), nrow = 2))

```

```

R>
R> data <- ctGenerate(genm, n.subjects = 1, burnin = 200, dT = 1)
R>
R> ctIndplot(data, n.subjects = 1, n.manifest = 1, Tpoints = 200)
R>
R> model <- ctModel(Tpoints = 200, n.latent = 2, n.manifest = 1,
+   LAMBDA = matrix(c(1, 0), nrow = 1, ncol = 2),
+   DIFFUSION = matrix(c(0, 0, 0, "diffusion"), 2),
+   DRIFT = matrix(c(0, "regulation", 1, "diffusionAR"), nrow = 2),
+   CINT = matrix(c("processCINT", 0), nrow = 2))
R>
R> fit <- ctFit(data, model, stationary = c("TOVAR"), carefulFit = FALSE)

```

In the above, we focus on a model for a single subject, and specify with LAMBDA that a single manifest variable measures only the first latent process. With DIFFUSION we specify that only the 2nd process, our unobserved diffusion process, experiences standard random innovations. With DRIFT, we specify that the 2nd process has a freely estimated autoregression term, that the diffusion process directly impacts the first process with a 1:1 relationship, and that as the level of the main process increases, the level of the diffusion process decreases – providing necessary regulation. With CINT we specify that only the main process has a freely estimated continuous intercept (necessary for identification in this case).

Damped linear oscillator

Voelkle and Oud (2013) discuss modelling a damped linear oscillator in detail, however here we demonstrate how to load the data and fit the oscillating model from their paper. In this case, we also specify good starting values with the `startValues` argument to `ctModel`. Note that in both above and below examples, the argument `carefulFit = FALSE` is specified for `ctFit`, as we have found it can hinder optimization of higher order models.

```

R> data("Oscillating")
R>
R> inits <- c(-38, -.5, 1, 1, .1, 1, 0, .9)
R> names(inits) <- c("crosseffect", "autoeffect", "diffusion",
+   "T0var11", "T0var21", "T0var22", "m1", "m2")
R>
R> oscillatingm <- ctModel(n.latent = 2, n.manifest = 1, Tpoints = 11,
+   MANIFESTVAR = matrix(c(0), nrow = 1, ncol = 1),
+   LAMBDA = matrix(c(1, 0), nrow = 1, ncol = 2),
+   TOMEANS = matrix(c('m1', 'm2'), nrow = 2, ncol = 1),
+   TOVAR = matrix(c("T0var11", "T0var21", 0, "T0var22"), nrow = 2, ncol = 2),
+   DRIFT = matrix(c(0, "crosseffect", 1, "autoeffect"), nrow = 2, ncol = 2),
+   CINT = matrix(0, ncol = 1, nrow = 2),
+   DIFFUSION = matrix(c(0, 0, 0, "diffusion"), nrow = 2, ncol = 2),
+   startValues = inits)
R>
R> oscillatingf <- ctFit(Oscillating, oscillatingm, carefulFit = FALSE)

```

8. Additional specification options and tips for model estimation

Given the complexity of parameter constraints, and that for some classes of models multiple minima may exist, parameter estimation is sometimes difficult. To ensure reliable estimation, there are some additional approaches that may be helpful. By default the argument `carefulFit = TRUE` for the `ctFit` function is specified. This initiates a two-step procedure, in which the first step penalises the likelihood⁷ to help maintain potentially problematic parameters close to 0, and then uses these estimates as starting values for maximum likelihood estimation. Though often useful, in some cases (particularly those with complex dynamics) it can help to switch this off. Beyond this, as a general guideline we suggest starting with simpler, more constrained models and freeing parameters in a stepwise fashion. This could involve developing the measurement model separately, estimating only autoregressive parameters of the DRIFT matrix at first (in simple models, this means constraining the off-diagonals of the DRIFT matrix to 0), or fixing the factor loading matrix prior to free estimation. If progression to additional complexity results in worse likelihood values, the optimization has resulted in a local rather than global optimum. In such a case, ensure that sensible starting values are specified. These may be specified in the `startValues` argument of `ctModel`, as shown in the oscillating example of Section 7.5, or alternatively, the raw **OpenMx** parameters⁸ may be extracted from a previous fit using the **OpenMx** function `omxGetParameters`, and used with `ctFit` via the `omxStartValues` argument. The following code is an example of how this would be applied to the first fitting example, from Section 6.

```
R> omxInits <- omxGetParameters(example1fit$mxobj)
R>
R> fitWithInits <- ctFit(data = ctExample1, ctmodelobj = example1model,
+   omxStartValues = omxInits)
```

If stepwise model building with starting values based on simpler fits still fails to produce an improved solution, some of the following suggestions may be helpful. The time scale, although theoretically unimportant in the sense that all time ranges can be accounted for, can be computationally very relevant. It is helpful to choose a scale that roughly matches the expected dynamics – for instance a time scale of nanoseconds for panel data measured yearly would be problematic, instead, a yearly or monthly time scale could be used. Centering the *grand* mean of the variables to 0 may help, as can standardising the variances, particularly in cases where both a measurement model and dynamic model are estimated. Trying a different optimizer may help, by default the SLSQP optimizer is requested via **OpenMx**, but setting the argument `optimizer="NPSOL"` to `ctFit` may in some cases be better. Note that for NPSOL, **OpenMx** must be downloaded directly via the **OpenMx** website, rather than via CRAN. One way to search for an improved solution is simply to try many times with varying starting values. This is automated by default using the `mxTryHard` function from **OpenMx**, however you may want to increase the `retryattempts` argument to `ctFit`, or simply re-run `ctFit` many times, as it generates unspecified starting values with some limited randomness. However, since both automated procedures begin within a similar range, for truly problematic

⁷The sum of squares of each parameter that is neither factor loading nor mean related is added to the likelihood

⁸One should bear in mind that the parameters used within **OpenMx** are transformations of the continuous time parameters to allow unconstrained optimization, see Section 5.

cases one may consider adding more extensive randomness to the starting values manually. In situations with a limited number of time points or of high complexity, you may implement the stationarity assumption, so that parameters related to the first time point are no longer estimated, but constrained to the asymptotic effects, when the time interval $\Delta t \rightarrow \infty$. This can make optimization more straightforward, and may serve as a useful basis for determining starting values, or as a viable model in itself. For more discussion regarding stationarity conditions see Section 4.3. In some cases, optimizing over the continuous time parameters (the default) results in fits that do not pass every check and you may be left with warnings. If this occurs, you can instead optimize over asymptotic variants of the parameters, by using the argument `asymptotes = FALSE` to `ctFit`. This will in general produce equivalent results if the DIFFUSION, CINT, and TIPRED matrices are all freely estimated, though the raw parameters of these matrices will look different. If these matrices have been constrained in some way, this approach is not recommended.

8.1. Optimization performance

When time intervals vary for every individual, optimization can be quite slow. To quickly estimate approximate versions of a model, you may use the `meanIntervals = TRUE` argument to `ctFit`, which will set every individual's time intervals to the mean of the interval across all individuals. A step further even is to specify the argument `objective = "cov"` in order to estimate a covariance matrix from the supplied data and fit directly to that. In cases with variability in time intervals these approaches will substantially speed up optimization, but also waste information and bias parameters. Using such an approach in combination with a constrained DRIFT matrix to generate starting values can be an excellent way to increase both speed and reliability of estimation for large or complex problems.

9. Limitations and future directions

Currently, a number of assumptions are present in the specification of continuous time models implemented in *ctsem*. Although the processes are allowed to begin at different levels and variances, from then on a time-invariant model is assumed. Thus, *ctsem* cannot presently account for time-varying aspects of the processes, except in the form of observed exogenous inputs via time dependent predictors. Although as with many discrete models we could free various parameters across measurement occasions, their meaning would become unclear, as each measurement occasion (set of `n.manifest` columns in the wide format data) may contain observations from many different times. Instead, models which allow parameters to vary as a function of time could be incorporated in the future as per the time-varying specification in Oud and Jansen (2000). As we fit using full information maximum likelihood, standard assumptions regarding multivariate normality apply to any manifest variables. Generalisations of the measurement model to allow for non-normal indicators could be easily implemented using the regular **OpenMx** functionality however. Although we allow for heterogeneity in the level of the processes across individuals, heterogeneity in other parameters is not accounted for, and can only be examined via multiple group approaches. Presently, effects are assumed to be transmitted near instantaneously, as we do not estimate a dead time between inputs and the effect of inputs. We believe this is unlikely to severely impact estimates unless the dead time is of a similar or greater order of magnitude as the time course of effects, however such a

parameter could potentially be incorporated within the continuous time equations (Richard 2003). Although in such areas **ctsem** may benefit from expansion, **ctsem** as it stands allows for the straightforward specification of continuous time dynamic models for both panel and time series data, which may include a measurement model, exogenous predictors, multiple processes, unobserved heterogeneity, multiple groups, as well as easy to specify parameter constraints and more complex dynamic specifications.

10. Acknowledgements

We would like to thank the Intra Person Dynamics and the Formal Methods research groups at the Max Planck Institute for Human Development for assistance with this work, as well as Joshua Pritikin and the **OpenMx** development team for feedback and fast response to issues.

References

- Arnold L (1974). *Stochastic Differential Equations: Theory and Applications*. John Wiley & Sons, New York.
- Balestra P, Nerlove M (1966). “Pooling Cross Section and Time Series Data in the Estimation of a Dynamic Model: The Demand for Natural Gas.” *Econometrica*, **34**(3), 585–612. ISSN 0012-9682. doi:10.2307/1909771. URL <http://www.jstor.org/stable/1909771>.
- Bollen KA, Brand JE (2010). “A General Panel Model with Random and Fixed Effects: A Structural Equations Approach.” *Social Forces*, **89**(1), 1–34. ISSN 0037-7732, 1534-7605. doi:10.1353/sof.2010.0072. URL <http://sf.oxfordjournals.org/content/89/1/1>.
- Boukhetala K, Guidoum AC (2014). “**Sim. DiffProc**: Simulation of Diffusion Processes.” URL <http://CRAN.R-project.org/package=Sim.DiffProc>.
- Brouste A, Fukasawa M, Hino H, Iacus SM, Kamatani K, Koike Y, Masuda H, Nomura R, Ogihara T, Shimuzu Y, others (2014). “The **yuima** project: A computational framework for simulation and inference of stochastic differential equations.” *Journal of Statistical Software*, **57**(4), 1–51. URL <https://air.unimi.it/retrieve/handle/2434/232022/310984/v57i04.pdf>.
- Canova F, Ciccarelli M, Ortega E (2012). “Do Institutional Changes Affect Business Cycles? Evidence from Europe.” *Journal of Economic Dynamics and Control*, **36**(10), 1520–1533. ISSN 0165-1889. doi:10.1016/j.jedc.2012.03.017. URL <http://www.sciencedirect.com/science/article/pii/S0165188912000942>.
- Chow SM, Ho MhR, Hamaker EL, Dolan CV (2010). “Equivalence and Differences Between Structural Equation Modeling and State-Space Modeling Techniques.” *Structural Equation Modeling: A Multidisciplinary Journal*, **17**(2), 303–332. ISSN 1070-5511. doi:10.1080/10705511003661553.
- Coleman JS (1964). “Introduction to Mathematical Sociology.” *London Free Press Glencoe*.

- Driver CC, Oud JHL, Voelkle MC (2015). “Continuous Time Structural Equation Modelling With R Package *ctsem*.” *Submitted to Journal of Statistical Software*.
- Durbin J, Koopman SJ (2012). *Time Series Analysis by State Space Methods: Second Edition*. Oxford University Press. ISBN 978-0-19-964117-8.
- Ghisletta P, Lindenberger U (2005). “Exploring Structural Dynamics Within and Between Sensory and Intellectual Functioning in Old and Very Old Age: Longitudinal Evidence from the Berlin Aging Study.” *Intelligence*, **33**(6), 555–587. ISSN 0160-2896. doi:10.1016/j.intell.2005.07.002. URL <http://www.sciencedirect.com/science/article/pii/S0160289605000784>.
- Grijalva CG, Nuorti JP, Arbogast PG, Martin SW, Edwards KM, Griffin MR (2007). “Decline in Pneumonia Admissions After Routine Childhood Immunisation with Pneumococcal Conjugate Vaccine in the USA: A Time-Series Analysis.” *The Lancet*, **369**(9568), 1179–1186. ISSN 0140-6736. doi:10.1016/S0140-6736(07)60564-9. URL <http://www.sciencedirect.com/science/article/pii/S0140673607605649>.
- Halaby CN (2004). “Panel Models in Sociological Research: Theory into Practice.” *Annual Review of Sociology*, **30**(1), 507–544. ISSN 0360-0572. doi:10.1146/annurev.soc.30.012703.110629. URL <http://dx.doi.org/10.1146/annurev.soc.30.012703.110629>.
- Hannan MT, Tuma NB (1979). “Methods for Temporal Analysis.” *Annual Review of Sociology*, **5**(1), 303–328. ISSN 0360-0572. doi:10.1146/annurev.so.05.080179.001511. URL <http://www.jstor.org/stable/2945957>.
- Helgason T, Tomasson H, Zoega T (2004). “Antidepressants and public health in Iceland.” *The British Journal of Psychiatry*, **184**(2), 157–162. ISSN 0007-1250, 1472-1465. doi:10.1192/bjp.184.2.157. URL <http://bjp.rcpsych.org/content/184/2/157>.
- Higham N (2009). “The Scaling and Squaring Method for the Matrix Exponential Revisited.” *SIAM Review*, **51**(4), 747–764. ISSN 0036-1445. doi:10.1137/090768539. URL <http://epubs.siam.org/doi/abs/10.1137/090768539>.
- Hunter MD (2014). *State Space Dynamic Mixture Modeling: Finding People With Similar Patterns Of Change*. Ph.D. thesis, University of Oklahoma, Norman, OK.
- Iacus SM (2015). “*sde*: Simulation and Inference for Stochastic Differential Equations.” URL <https://cran.r-project.org/web/packages/sde/index.html>.
- Keijsers L, Loeber R, Branje S, Meeus W (2011). “Bidirectional Links and Concurrent Development of Parent-Child Relationships and Boys’ Offending Behavior.” *Journal of Abnormal Psychology*, **120**(4), 878–889. ISSN 1939-1846(Electronic);0021-843X(Print). doi:10.1037/a0024588.
- King AA, Ionides EL, Bretó CM, Ellner S, Kendall B, Wearing H, Ferrari MJ, Lavine M, Reuman DC (2010). “*pomp*: Statistical inference for partially observed Markov processes (R package).” URL <http://pomp.r-forge.r-project.org>.

- Klim S, Mortensen SB, Kristensen NR, Overgaard RV, Madsen H (2009). "Population stochastic modelling (**PSM**) - an R package for mixed-effects models based on stochastic differential equations." *Computer methods and programs in biomedicine*, **94**(3), 279–289. URL <http://www.sciencedirect.com/science/article/pii/S0169260709000455>.
- McArdle JJ, McDonald RP (1984). "Some Algebraic Properties of the Reticular Action Model for Moment Structures." *British Journal of Mathematical and Statistical Psychology*, **37**(2), 234–251. ISSN 2044-8317. doi:10.1111/j.2044-8317.1984.tb00802.x. URL <http://onlinelibrary.wiley.com/doi/10.1111/j.2044-8317.1984.tb00802.x/full>.
- Mundlak Y (1978). "On the Pooling of Time Series and Cross Section Data." *Econometrica*, **46**(1), 69–85. ISSN 0012-9682. doi:10.2307/1913646. URL <http://www.jstor.org/stable/1913646>.
- Neale MC, Hunter MD, Pritikin JN, Zahery M, Brick TR, Kirkpatrick RM, Estabrook R, Bates TC, Maes HH, Boker SM (2015). "**OpenMx** 2.0: Extended Structural Equation and Statistical Modeling." *Psychometrika*, pp. 1–15. ISSN 0033-3123, 1860-0980. doi:10.1007/s11336-014-9435-8. URL <http://link.springer.com/article/10.1007/s11336-014-9435-8>.
- Oud JHL (2002). "Continuous Time Modeling of the Cross-Lagged Panel Design." *Kwantitatieve Methoden*, **69**(01), 1–26. URL <http://members.chello.nl/j.oud7/Oud2002.pdf>.
- Oud JHL, Jansen RARG (2000). "Continuous Time State Space Modeling of Panel Data by Means of SEM." *Psychometrika*, **65**(2), 199–215. ISSN 0033-3123, 1860-0980. doi:10.1007/BF02294374. URL <http://link.springer.com/article/10.1007/BF02294374>.
- R Core Team (2014). *R: A Language and Environment for Statistical Computing*. R Foundation for Statistical Computing, Vienna, Austria. URL <http://www.R-project.org/>.
- Richard JP (2003). "Time-Delay Systems: An Overview of Some Recent Advances and Open Problems." *Automatica*, **39**(10), 1667–1694. ISSN 0005-1098. doi:10.1016/S0005-1098(03)00167-5. URL <http://www.sciencedirect.com/science/article/pii/S0005109803001675>.
- Rindskopf D (1984). "Using Phantom and Imaginary Latent Variables to Parameterize Constraints in Linear Structural Models." *Psychometrika*, **49**(1), 37–47. ISSN 0033-3123, 1860-0980. doi:10.1007/BF02294204. URL <http://link.springer.com/article/10.1007/BF02294204>.
- Singer H (1998). "Continuous Panel Models with Time Dependent Parameters." *Journal of Mathematical Sociology*, **23**(2), 77–98. ISSN 0022250X. doi:10.1080/0022250X.1998.9990214. URL <http://search.ebscohost.com/login.aspx?direct=true&db=sih&AN=4004337&site=ehost-live&scope=site>.
- Voelkle MC, Driver CC, Oud JHL (2015). "Accounting for Unobserved Heterogeneity in Panel Models with Unequal Sampling Intervals." *Manuscript in preparation*.
- Voelkle MC, Oud JHL (2013). "Continuous Time Modelling with Individually Varying Time Intervals for Oscillating and Non-Oscillating Processes." *British Journal of Mathematical and Statistical Psychology*, **66**(1), 103–126. ISSN 2044-8317. doi:10.1111/

- j.2044-8317.2012.02043.x. URL <http://onlinelibrary.wiley.com/doi/10.1111/j.2044-8317.2012.02043.x/abstract>.
- Voelkle MC, Oud JHL (2015). “Relating Latent Change Score and Continuous Time Models.” *Structural Equation Modeling: A Multidisciplinary Journal*, **22**(3), 366–381. ISSN 1070-5511. doi:10.1080/10705511.2014.935918. URL <http://dx.doi.org/10.1080/10705511.2014.935918>.
- Voelkle MC, Oud JHL, Davidov E, Schmidt P (2012). “An SEM Approach to Continuous Time Modeling of Panel Data: Relating Authoritarianism and Anomia.” *Psychological Methods*, **17**(2), 176–192. ISSN 1082-989X. doi:10.1037/a0027543.
- von Oertzen T, Brandmaier AM, Tsang S (2015). “Structural Equation Modeling With Ω nyx.” *Structural Equation Modeling: A Multidisciplinary Journal*, **22**(1), 148–161. ISSN 1070-5511. doi:10.1080/10705511.2014.935842. URL <http://dx.doi.org/10.1080/10705511.2014.935842>.
- Wang Z (2013). “cts: An R Package for Continuous Time Autoregressive Models via Kalman Filter.” *Journal of Statistical Software*, **53**(5), 1–19. URL <ftp://apache.cs.uu.nl/mirror/CRAN/web/packages/cts/vignettes/kf.pdf>.

A. Comparison to discrete time approach

To highlight the problems associated with treating all time intervals in a dataset as equivalent, in this example we use the data and model specified in Section 7.1.1, but set all the time intervals to the mean time interval.

```
R> data("ctExample1")
R> traitmodel <- ctModel(n.manifest = 2, n.latent = 2, Tpoints = 6,
+   LAMBDA = diag(2), manifestNames = c("LeisureTime", "Happiness"),
+   latentNames = c("LeisureTime", "Happiness"), TRAITVAR = "auto")
R> traitfit <- ctFit(datawide = ctExample1, ctmodelobj = traitmodel)
R>
R> discrete <- ctExample1
R> discrete[, paste0('dT', 1:5)] <- mean(discrete[, paste0('dT', 1:5)])
R> discretedefit <- ctFit(discrete, traitmodel)
R>
R> discretedefit <- ctCI(discretedefit, confidenceintervals = 'DRIFT')
R> summary(discretedefit)$omxsummary$CI
```

	lbound	estimate	ubound	note
ctsem.DRIFT[1,1]	NA	-0.00001	NA	!!!
ctsem.DRIFT[2,1]	0.0789	0.20781	0.4814	
ctsem.DRIFT[1,2]	-0.2539	-0.14556	-0.0665	
ctsem.DRIFT[2,2]	-0.3143	-0.12404	-0.0358	

The 95% confidence intervals for DRIFT[1,2] now do not include 0 and the point estimate is lower, which could lead one to accept the hypothesis that earlier increases in happiness lead to later decreases in leisure time. This is however not the case, the true parameter for DRIFT[1,2] is 0. If we fit confidence intervals for the already fitted correct model (from Section 7.1.1, that accounts for different time intervals, the true value of 0 is within the 95% confidence region.

```
R> example1traitfit <- ctCI(traitfit, confidenceintervals = 'DRIFT')
R> summary(example1traitfit)$omxsummary$CI
```

	lbound	estimate	ubound	note
ctsem.DRIFT[1,1]	-0.515	-0.110	-0.0000103	
ctsem.DRIFT[2,1]	0.156	0.387	0.7151964	
ctsem.DRIFT[1,2]	-0.310	-0.134	0.1780011	
ctsem.DRIFT[2,2]	-0.659	-0.344	-0.1732648	

B. Package comparisons

The following script loops over a sequence in which data is generated from a very simple model (to facilitate comparison), then various packages are used to fit the data, and the distribution of parameter estimates is then plotted. *ctsem* is used to generate 500 time points of data for a single individual, for a single perfectly measured, stationary process with a drift value of -0.3. The different packages at times use different transformations of the parameters, but for ease of comparison these are transformed to the drift parameter in *ctsem*. This comparison is not intended as a critique of any package, differences in intended use and estimation routines may result in the observed differences, and it is hoped the provided code may help others to explore alternatives when necessary.

```
R> if (!requireNamespace("PSM", quietly = TRUE)) {
+   stop("PSM package needed for this function to work. Please install it.",
+       call. = FALSE)
+ }
R> if (!requireNamespace("cts", quietly = TRUE)) {
+   stop("cts package needed for this function to work. Please install it.",
+       call. = FALSE)
+ }
R> if (!requireNamespace("yuima", quietly = TRUE)) {
+   stop("yuima package needed for this function to work. Please install it.",
+       call. = FALSE)
+ }
R> output <- matrix(NA, 10, 7)
R> colnames(output) <- c('True', 'ctsem', 'cts', 'PSM', 'yuima', 'arima', 'OpenMx')
R> for(i in 1:nrow(output)){
+   generatingModel <- ctModel(n.latent = 1, n.manifest = 1, Tpoints = 500,
+   LAMBDA = diag(1), DRIFT = matrix(-.3, nrow = 1),
+   CINT = matrix(3, 1, 1),
+   MANIFESTVAR = diag(0, 1),
+   DIFFUSION = t(chol(diag(5, 1))))
+
+   output[i, 1] <- generatingModel$DRIFT #true value
+
+   ctsemData <- ctGenerate(generatingModel, n.subjects=1, burnin=300)
+   longData <- ctWideToLong(ctsemData, Tpoints=500, n.manifest=1)
+   longData <- ctDeintervalise(longData)
+
+   ### ctsem package
+   ctsemModel <- ctModel(n.latent=1, n.manifest = 1, Tpoints = 500,
+   MANIFESTVAR = diag(0, 1),
+   LAMBDA = diag(1))
+   ctsemFit <- ctFit(ctsemData, ctsemModel, stationary = c('TOVAR'))
+   output[i,2] <- mxEval(DRIFT, ctsemFit$mxobj)
+
+   ### CTS package
```

```

+ ctsData <- longData[, c('AbsTime', 'Y1')]
+ library(cts)
+ ctsFit <- car(ctsData, order = 1, scale = 1)
+ output[i, 3] <- -1 * (1 + ctsFit$phi) / (1 - ctsFit$phi)
+
+ ### PSM package
+ psmFit <- ctPSMfit(ctsemData, omxStartValues =
+   omxGetParameters(ctsemFit$mxobj), ctsemModel)
+ output[i, 4] <- -exp(psmFit$PSMfit$opt$par[2])
+
+ ### yuima package (not plotted - potential issues due to dT=1)
+ library(yuima)
+ mod <- setModel(drift="drift * x + cint", diffusion = "diffusion")
+ ou <- setYuima(model = mod, data = setData(longData[, 'Y1'], delta = 1))
+ mlout <- qmle(ou, start = list(drift = -.3, diffusion = 1, cint = 1))
+ output[i, 5] <- mlout@coef[2]
+
+ ### arima (from stats package, discrete time analysis only)
+ arfit <- arima(longData[, 'Y1'], order = c(1, 0, 0))
+ log(arfit$coef[1]) #transform ar1 parameter to drift parameter
+ output[i, 6] <- log(arfit$coef[1])
+
+ ### OpenMx state space continuous time function (specified via ctsem here)
+ ctsemModel <- ctModel(n.latent=1, n.manifest = 1, Tpoints = 500,
+   MANIFESTVAR = diag(0, 1), TOVAR=diag(1), LAMBDA = diag(1))
+ mxFit <- ctFit(ctsemData, ctsemModel, objective='Kalmanmx',
+   carefulFit = FALSE)
+ output[i,7] <- mxEval(DRIFT, ctsemFit$mxobj)
+
+ } #end for loop
R>
R> ### plot output
R> plot(density(output[1:i, 2]), xlim = c(-.4, -.1), lty = 2, lwd = 1,
+   ylab='Density',
+   main = 'Density of drift parameter estimates (true value -0.3)')
R> points(density(output[1:i, 3]), col='red', type='l', lty=3, lwd=1)
R> points(density(output[1:i, 4]), col='green', type='l', lty=2, lwd=1)
R> points(density(output[1:i, 5]), col='blue', type='l', lwd=1, lty=3)
R> points(density(output[1:i, 6]), col='purple', type='l', lwd=1, lty=2)
R> points(density(output[1:i, 7]), col='yellow', type='l', lwd=1, lty=5)
R> legend('topleft', bty='n',
+   text.col = c('black', 'red', 'green', 'blue', 'yellow'),
+   legend = c('ctsem', 'cts', 'PSM', 'arima', 'OpenMx'))

```

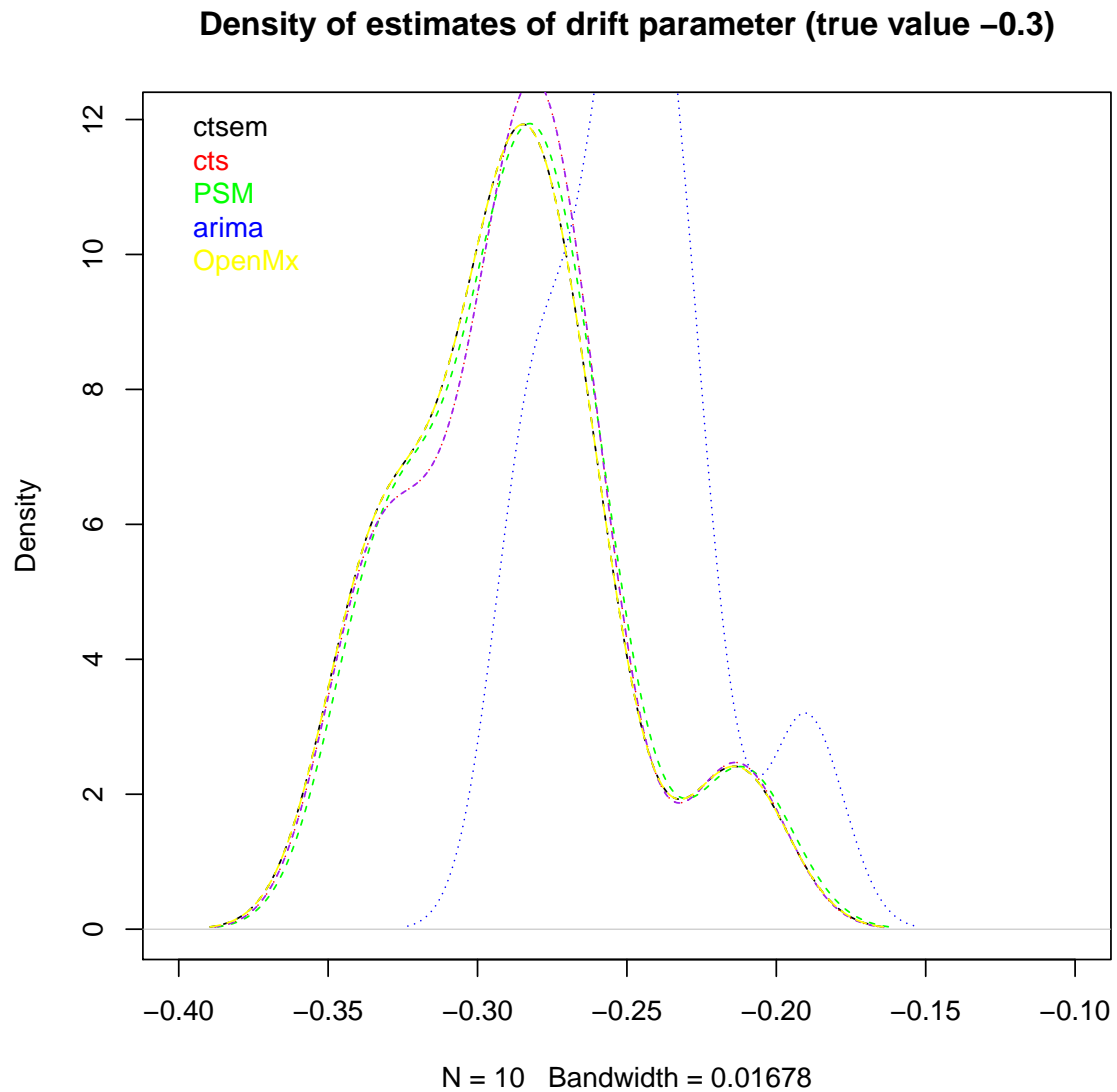


Figure 6: Density of drift parameter estimates from simulated datasets of a single process, stationary model with no measurement error, a true drift value of -0.3 , and 500 observations of a single individual.

Affiliation:

Charles Driver

Center for Lifespan Psychology

Max Planck Institute for Human Development

Lentzeallee 94, 14195 Berlin

Telephone: +49 30 82406-367 E-mail: driver@mpib-berlin.mpg.de

URL: <http://www.mpib-berlin.mpg.de/en/staff/charles-driver>